

STATEMENT OF CAPABILITY

# Northern Territory Hydrogen Supply Chain



COVER IMAGES (LEFT TO RIGHT):

Artist's impression  
of proposed Middle  
Arm export wharfs

Freight train in the Barkly

Credit: Charles Darwin  
University. REMHART  
Electrolyser Facility  
at East Arm

Solar Farm

CURRENT PAGE:

Wind farm and  
transmission lines



# Northern Territory Hydrogen Supply Chain – Statement Of Capability

Hydrogen represents a significant longer-term economic opportunity for the Territory, with the global hydrogen market expected to reach US\$1.4 trillion by 2050. Hydrogen can be exported as an energy carrier or used in manufacturing low-emission products such as ammonia and sustainable aviation fuel. Additionally, hydrogen is expected to contribute to decarbonising the Territory's hard-to-abate industries, including heavy road transport, power generation, and emission-intensive mining activities.

The Territory is well-placed to develop an export-scale hydrogen industry, leveraging competitive advantages such as:

- Abundant renewable energy resources, including globally competitive solar irradiance and vast land areas suitable for development.
- Proven experience in delivering large-scale energy production and export projects, with the capability to adapt these skills to hydrogen projects.
- A strategic location, in close proximity to key international export markets.
- Established and planned infrastructure networks, including deep-water ports, electricity and gas networks, road and rail.

**A robust and diversified local supply chain is essential for the successful growth of the hydrogen industry and to maximise long-term economic benefits for Territory businesses.**

This study provides a thorough assessment of current local industry capability to support a future hydrogen industry in the Territory. It recognises the substantial potential of the Territory's existing

businesses and their transferable capabilities to support the developing hydrogen industry. Additionally, it identifies opportunities for businesses to diversify and expand their capabilities within this sector.

This **Statement of Capability** assessment builds upon the **Future NT Hydrogen Supply Chain Map**, published in July 2024, which provides a graphical overview of the hydrogen supply chain in the Territory. The Supply Chain Map includes relevant feedstock inputs, production pathways, processes, applications, and expected end uses of hydrogen. It covers both green hydrogen (produced by water electrolysis) and blue hydrogen (produced from natural gas with carbon capture), assessing these production pathways individually and holistically.

The development of the Supply Chain Map involved extensive research and analysis to determine the most likely future scenarios and expected timeframes for the Territory's hydrogen industry. The research included stakeholder consultations with industry experts and proponents to ensure an accurate and comprehensive representation of likely future scenarios and timeframes for the Territory's hydrogen industry. Following the Map's publication, this initial Territory Statement of Capability assessment evaluates approximately 150 prioritised work packages to establish a baseline understanding of the Territory's capacity to support hydrogen related projects currently under development. The work packages were selected and prioritised based on anticipated timelines for hydrogen industry development and early projected hydrogen end uses.

**A robust local supply chain is essential for the successful growth of the hydrogen industry and to maximise long-term economic benefits for Territory businesses.**

# Key Findings

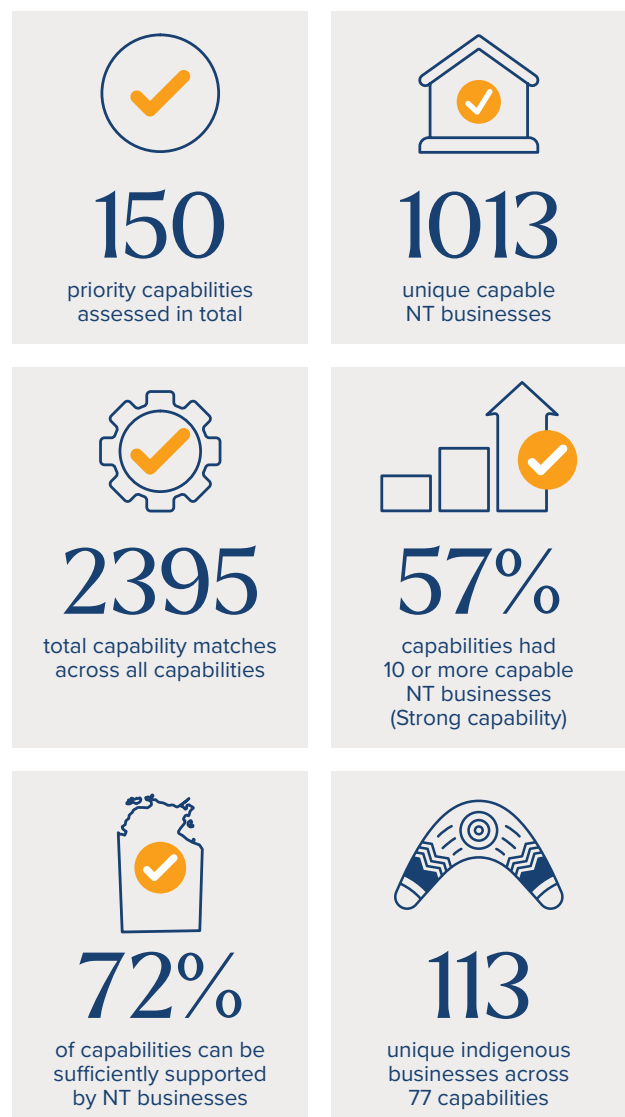
This report provides a comprehensive analysis of the Territory's business capabilities to support the emerging hydrogen industry. Commissioned by the Department of Mining and Energy, the Industry Capability Network Northern Territory (ICN NT) evaluated local trade, service, and supply capabilities, outlining the region's current strengths, supply chain readiness, and areas where national or international support may be required.

ICN NT worked closely with key government and industry stakeholders to understand the Territory specific requirements of the hydrogen industry. This collaboration informed the development of a hydrogen supply chain map, which initially identified 235 capabilities. Approximately 150 capabilities were prioritised and selected for this detailed capability assessment. These priority capabilities were mapped within 7 broad categories.

- Renewable Energy
- Water Services
- Construction and Maintenance
- Hydrogen Production
- Professional and Technical Services
- Common Elements Supply
- Transport and Logistics

In total, 1,013 unique businesses were identified as capable of meeting the high-level requirements of one or more capabilities. There were 2,395 Territory capability matches across all 150 capabilities. Some businesses were identified across multiple capabilities, resulting in a higher number of capability matches than total unique businesses. Of these 150 capabilities, 57% were considered to have strong Territory capability, and 72% could be sufficiently supported by existing Territory businesses. 13% showed insufficient Territory capability. However, there is nationwide capability for these. 15% had no Territory-based capability, of which 6% of the total capabilities in this report could not be sufficiently supported by Australian businesses.

Indigenous-owned businesses are well-positioned to play a significant role in Territory's hydrogen supply chain. A total of 113 Indigenous businesses were identified across 77 capabilities, with the highest capability in the 'Construction and Civil' sub-category. This included 48 Indigenous businesses supporting areas such as non-process infrastructure (14 businesses) and road construction (13 businesses). Additionally, 35 Indigenous businesses were identified in 'Professional and Technical Services,' including 16 with expertise in Traditional Owner (TO) engagement.



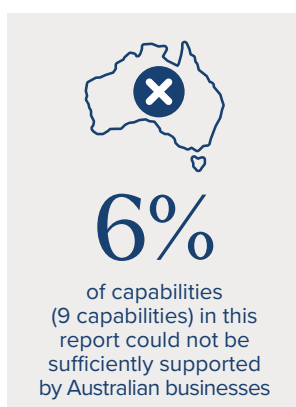
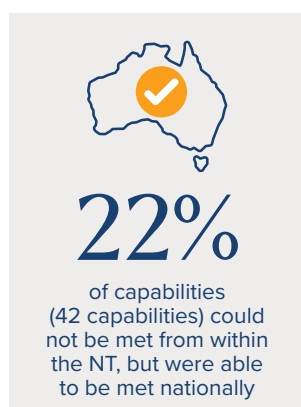
## Areas of high Territory capability

The Territory demonstrates strong business capability across several key categories and sub-categories including:

- Construction and Civil (280)
- Professional and Technical Services (238)
- Electrical and Communications (145)
- Water Services (114) capable businesses
- Mechanical Services (103) capable businesses
- Transport and Logistics (94)

### Key strengths

<b>Construction and Civil</b>	Non-process infrastructure (71), Civil construction - Roads (62), Bulk earthworks (54)
<b>Professional and Technical Services</b>	Stakeholder consultation (34), Engineering (33), Environmental consulting (29)
<b>Electrical and Communications</b>	Site electrical infrastructure (61), Cabling services (58)
<b>Water Services</b>	Hydraulic services (56), Pumping systems (38)
<b>Mechanical Services</b>	Heavy mechanical servicing (30), HVAC, Lagging, and Structural Components (27)
<b>Transport and Logistics</b>	Road freight (36), Warehousing (29)



## Opportunities for industry

The analysis identified 22 capabilities with no Territory-based capability, of these, 9 lacked sufficient national support including:

- Concentrated Solar Power (CSP) systems and components (4)
- Wind turbine, tower, and blade supply (3)
- Atmospheric water generation (1)
- Electrolyser systems (1)

Twenty capabilities across Renewable Energy, Water Services, Chemical Processing, metals supply, Civil and Construction, and Heating were identified as having low and insufficient Territory capability. However, these capabilities are available nationally.

Given the Territory's geographic remoteness and smaller industry size, Territory industry will continue to rely on interstate suppliers to meet many supply needs.

### Capabilities available nationally

<b>Water Services</b>	Reverse osmosis systems, deionised water polishers and desalination plant construction.
<b>Construction and Civil</b>	Lining system installation, solar farm construction.
<b>Metal Supply</b>	Aluminium, specialty metals, structural steel.
<b>Heating Components</b>	Burners, Heat Exchangers and Process Heaters.
<b>Chemical Processing</b>	Blue hydrogen processing, membrane separation, cryogenic separation.

## Geographic distribution

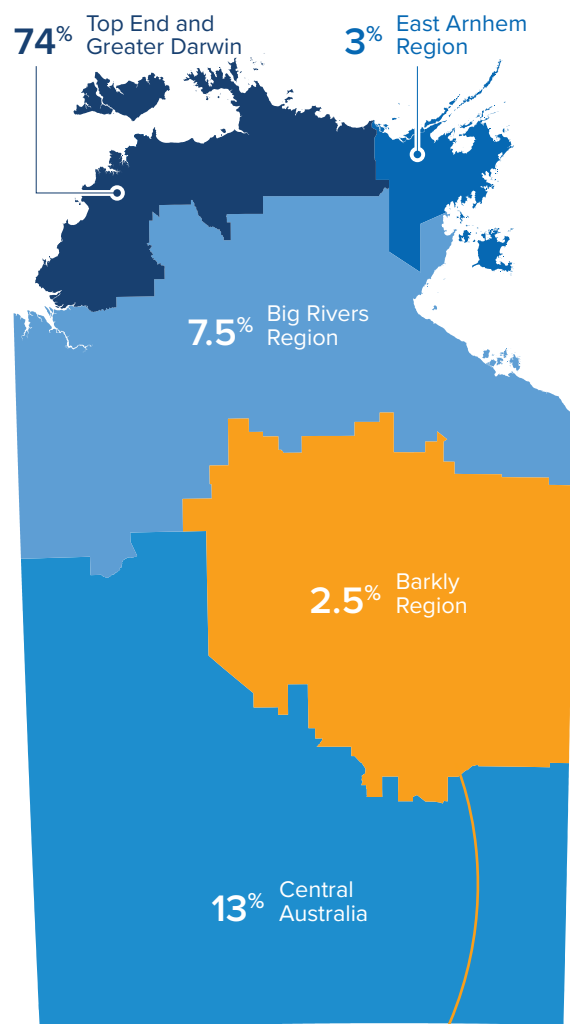
- **Top End and Greater Darwin:** Houses the majority of hydrogen-related capabilities with 863 businesses located here.
- **Central Australia:** Contains 152 capable businesses, offering additional capacity and capability to support regions like the Barkly.
- **Big Rivers Region:** 87 capable businesses, providing further support potential for the hydrogen industry.
- **Barkly Region:** Currently, it has 30 capable businesses, and building local capacity is essential as hydrogen projects grow. Given that the region will be the location for the majority of the large-scale renewable projects essential to the hydrogen industry, building capability in this region is of high importance.
- **East Arnhem:** Contains 34 capable businesses, with potential for capability expansion to meet industry needs as demand increases.

## Summary of findings

This report highlights the Territory's strong foundation to support a hydrogen industry, particularly in the Greater Darwin area. A key strength identified is the Territory's ability to leverage existing industrial expertise and infrastructure developed through major projects. This combination of proven capabilities and purpose-built infrastructure provides a strong platform for meeting the needs of the hydrogen industry, particularly in downstream processing and export activities.

However, significant gaps remain in critical areas such as renewable energy infrastructure, chemical processing (e.g., gas separation), and heating component supply, requiring interstate or international support.

Targeted development of local capabilities, particularly in regions like the Barkly, along with strategic partnerships and investment in capacity building, will be key to strengthening the Territory's ability to meet hydrogen industry demands. A strong local supply chain is essential to driving industry growth, boosting investor confidence, de-risking projects, and maximising economic benefits for Territory businesses.



Targeted development of local capabilities, particularly in regions like the Barkly, along with strategic partnerships and investment in capacity building will be key.



# About ICN

Established in 1984, ICN (Industry Capability Network) is an Australian non-profit organisation committed to connecting local suppliers with major projects across every state and territory. By gathering and maintaining detailed information on local businesses, such as their size, scale, products, services, accreditations, insurances, and project history, ICN ensures effective matching of suppliers to suitable projects and opportunities.

ICN partners with major projects nationwide to connect local vendors with relevant scopes of work. In the Territory, ICN NT supports registered businesses through six core focus areas:

- 1 Industry intelligence:** Collecting and maintaining comprehensive data on company size, products, services, accreditations, insurances, and project histories.
- 2 Procurement support:** Publishing project details, managing vendor assessments, and compiling bid lists.
- 3 Northern Territory Government support:** Providing reliable, efficient access to capable local suppliers and services for NT Government departments.
- 4 Strengthening local supply chains:** Promoting the capabilities of local industries, hosting industry briefings.
- 5 Supply chain mapping:** Connecting businesses with specific scopes of work, assessing capabilities across key industries, and identifying strengths and areas for improvement within various disciplines.
- 6 Data analysis:** Delivering insights such as financial forecasts, sector-specific metrics, and regional breakdowns to major project proponents, government entities, and local suppliers, helping to inform decision-making and highlight local industry strengths.

Over nearly four decades, ICN has built a reputation as a vital link between Australian businesses and major projects. By fostering industry participation, ICN creates opportunities for companies to engage in significant projects, enabling growth, enhancing capabilities, and strengthening market presence.

Building on its 40-year legacy, ICN remains dedicated to empowering Australian industry, driving sustainable growth and employment, and fostering resilient and efficient supply chains through a steadfast commitment to local procurement.

Businesses are encouraged to register with ICN Gateway to connect with major project proponents and gain access to new opportunities. By sharing your company information, ICN can showcase your capabilities, match you with relevant projects, and keep you informed about upcoming opportunities. Please refer to the QR code on the back cover or contact the ICN NT office using the details provided at the end of this report.



# Acknowledgements

Stakeholder consultation was essential to inform the analysis and recommendations in this report. ICN engaged key players in the hydrogen sector, including industry proponents and government agencies, to capture insights on the Territory's potential within the blue and green hydrogen supply chains.

Stakeholders were selected for their expertise and involvement in the Territory's hydrogen industry development, representing a range of insights across operational, and strategic perspectives.

“Capitalising on the opportunity to develop and grow the green hydrogen industry could revolutionise the Territory's economy by creating jobs and boosting local industry capacity while establishing us as a leader in exporting green energy at scale.”

SCOTT CRIDDLE, FOUNDER AND CEO OF ENERGY NORTH.

The project team acknowledges the contributions of the following stakeholders, who provided valuable insights on the current and future state of the Territory hydrogen sector:

- Department of Mining and Energy
- Department of Trade, Business and Asian Relations
- Department of Chief Minister and Cabinet
- Industry Capability Network South Australia
- Commonwealth Scientific and Industrial Research Organisation (CSIRO)
- Australian Trade and Investment Commission (Austrade)
- INPEX
- SunCable
- Larrakia Energy
- Progressive Green Solutions
- Climate Impact Capital (Green Springs Hydrogen)
- Energy North

Solar Farm



# Methodology

## Phase 1: Industry engagement and supply chain mapping

The first phase focused on engaging key stakeholders and creating a preliminary supply chain infographic to outline potential hydrogen industry requirements in the Territory.

### 1 Stakeholder engagement:

ICN NT consulted with key stakeholders, including government representatives and hydrogen project proponents, to address two primary objectives:

- Define the anticipated structure of the hydrogen supply chain in the Territory.
- Identify specific capabilities for each phase of the supply chain.

This engagement provided valuable insights into the requirements for both blue and green hydrogen supply chains.

### 2 Capability identification:

Based on stakeholder feedback, ICN NT identified 235 capabilities relevant to various stages of the hydrogen supply chain in the Territory. From these, the Northern Territory Government prioritised around 150 capabilities for detailed analysis, focusing on those expected to be required in the near term. These priority capabilities primarily cover the Feedstock, Production, and Carbon Capture and Storage (CCS) stages of the hydrogen supply chain, as illustrated in the supply chain infographic developed during this phase.

## Phase 2: Desktop research and supply chain capability assessment

The second phase involved assessing the Territory's capabilities identified in Phase 1 and evaluating national capabilities where local resources were limited.

### 1 Data collection:

ICN NT reviewed Territory suppliers' profiles within the ICN database, which include detailed information on products, services, and project histories. This data was supplemented with publicly available company information to create a comprehensive dataset.

### 2 Capability grouping:

Businesses were grouped according to their relevant capabilities and aligned with the required capabilities identified in Phase 1.

### 3 Capability assessment:

Each business was assessed for its technical ability to deliver specific capabilities. Where additional clarity was needed, ICN NT confidentially contacted selected businesses to verify their service offerings.

### 4 National capability analysis:

For requirements where Territory capability was limited or non-existent, ICN NT conducted a national search to identify potential suppliers across Australia. This search utilised ICN profiles, publicly available data, and targeted research. Identified national capabilities are marked with an Australian symbol throughout the report to distinguish them from Territory-based capabilities.

# Report Scope and Limitations

## Capability

For the purpose of this report, capability refers to a company's technical ability to perform a specific activity or piece of work. This includes the necessary skills, equipment, and expertise required to complete tasks effectively. ICN has assessed companies based on capability, as documented in their profiles or demonstrated through prior experience, rather than hypothetical or transferable skills. In some cases, transferable capabilities were considered, such as those required in the development of an LNG processing facility, where activities closely align with those in the hydrogen industry, recognising its status as an emerging sector.

## Capacity

Capacity, which has not been evaluated in this report, refers to a company's ability to handle its workload, including the scale of operations and the resources available to meet specific project requirements. Assessing capacity is inherently complex because it is highly variable and depends on factors such as:

- The timing and duration of when the capability is required.
- The company's existing commitments and concurrent projects.
- External influences such as market conditions or workforce availability.

Due to these factors, capacity was excluded from the scope of this assessment. This report focuses solely on identifying capability to ensure consistency and relevance.

The capability matches identified in this report reflect a point-in-time analysis as of September 2024.

## Selection criteria

Company data in this report has been sourced from ICN's database and filtered using the following criteria:

- Company data updated on or before 2 September 2024.
- Companies located within the Territory.
- Annual turnover exceeding \$1 million.
- Minimum employee count of five.

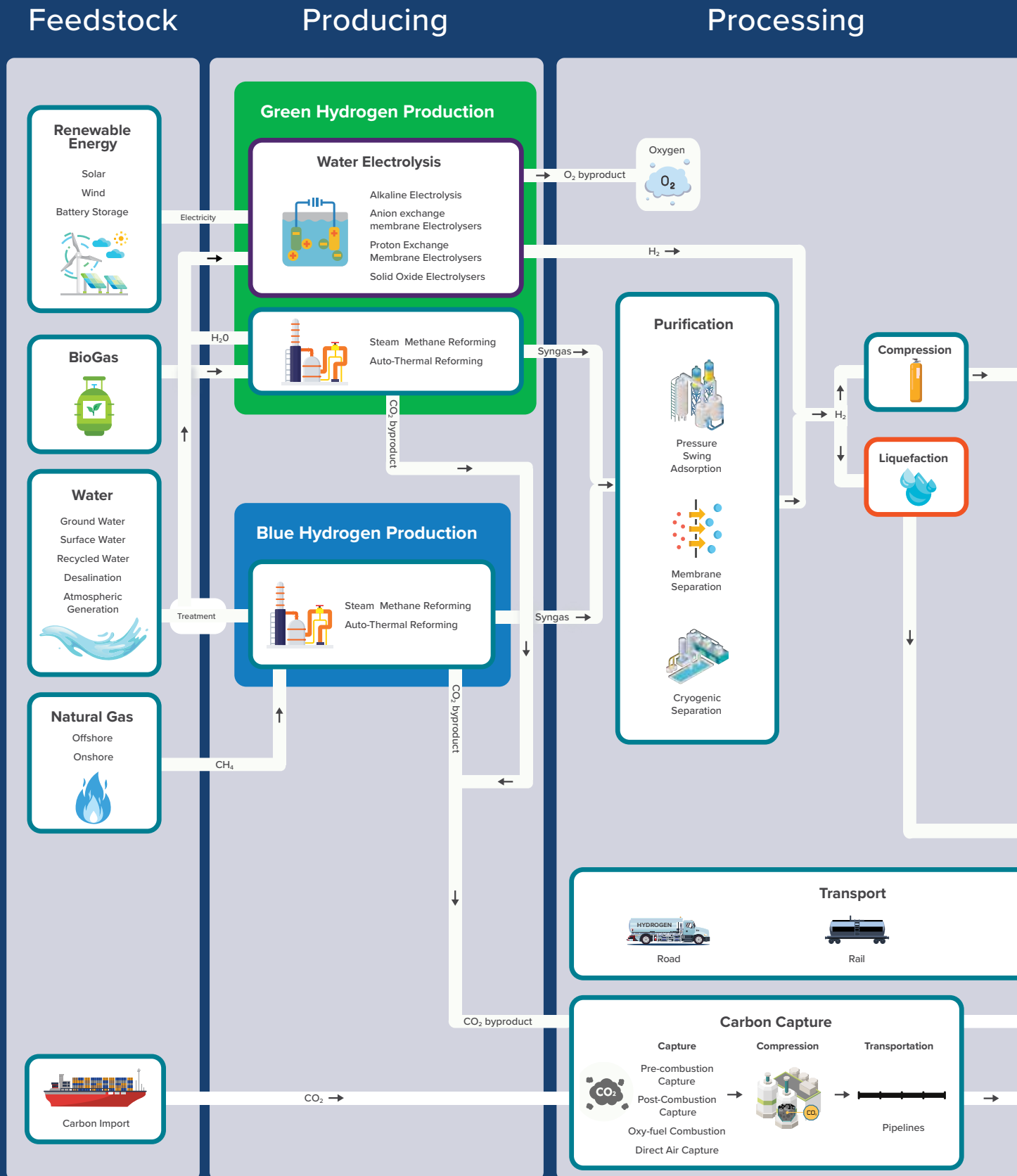
While this approach provides a clear baseline, certain capabilities may still be delivered by companies with fewer than five employees. However, to maintain consistency, these businesses were excluded.

## Limitations

ICN's data is drawn from a national database, and in cases where a company has multiple locations across Australia registered in their ICN profile, the turnover and employee numbers recorded may represent the company's national operations rather than their Territory-specific activities. This may impact the accuracy of Territory-specific assessments. However, for businesses with a single location in the Territory, this limitation does not apply.

ICN NT acknowledges that the precise demand for hydrogen-related capabilities and the specific scope of future Territory projects remains uncertain. As the hydrogen industry is in its early stages of development in Australia, the assessment does not encompass all niche areas of expertise. The capability matches identified in this report reflect a point-in-time analysis as of September 2024. As the sector matures, both local and national capabilities may evolve, influenced by future demand and investment in capacity-building.

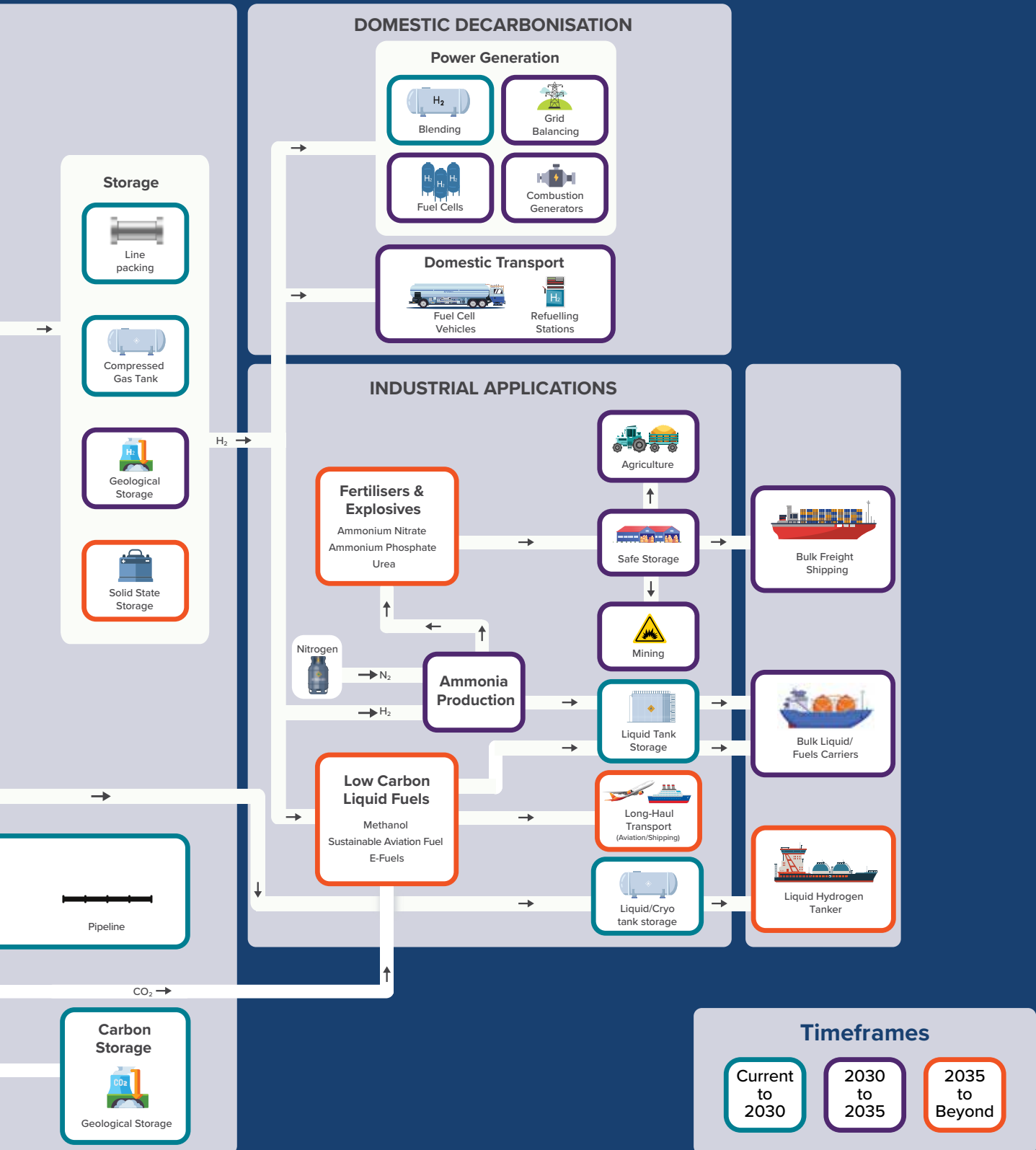
# Future Northern Territory



# Hydrogen Supply Chain

Using

Export



# Future Northern Territory Hydrogen Supply Chain Explanatory Note

The graphic on pages 12-13 is intended to provide a comprehensive overview of the anticipated future hydrogen supply chain from the perspective of industry capability in the Territory.

**This work aims to better understand the relevant inputs, pathways, technologies, processes, applications, and end-uses of clean hydrogen specific to the Territory.**

As such, many aspects have been prioritised or excluded to reflect the most likely potential future Territory hydrogen industry as accurately as possible.

In developing this graphic, ICN NT conducted significant stakeholder consultations with hydrogen experts and relevant industry representatives. Their feedback was invaluable in refining the supply chain stages and time frames to be appropriate to the Territory. This work reflects the best knowledge available at the specific point of time of the stakeholder consultations.

All future hydrogen and carbon capture projects will be subject to relevant approvals, assessments, and licensing under the Territory regulatory framework.

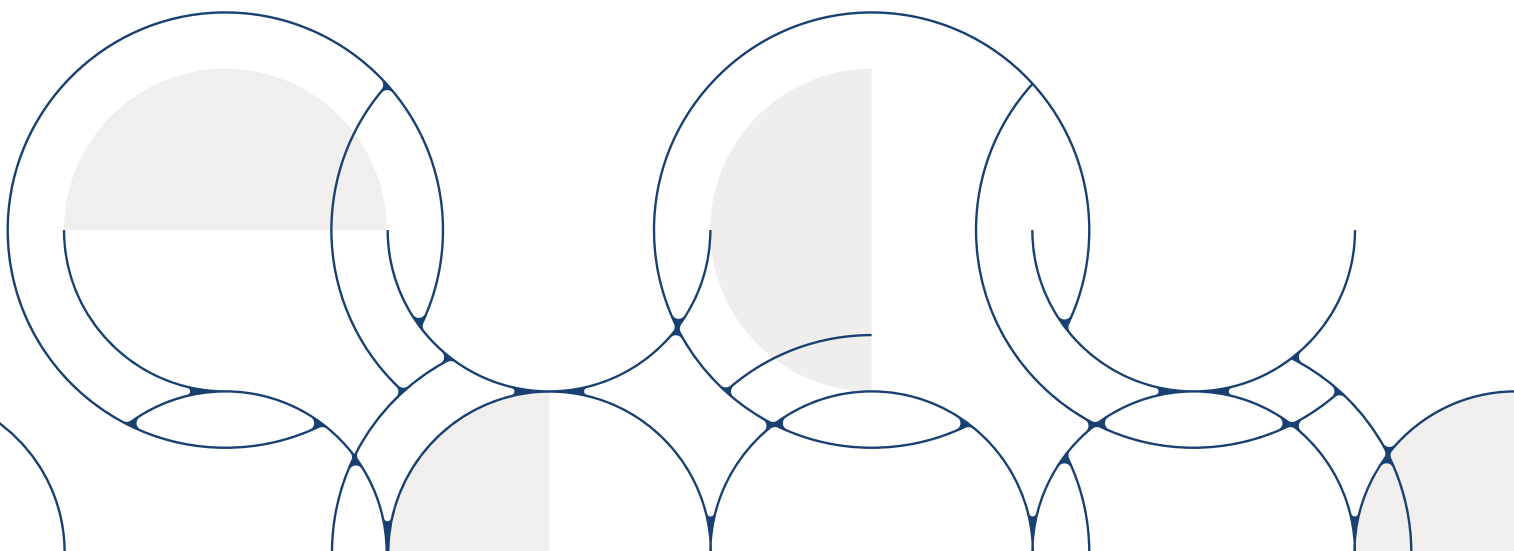
## Feedstock

A combination of wind and solar, complemented with battery storage, was agreed to be the most optimal energy mix to ensure uptake for the longest periods possible during the day. Some forms of renewable energy, such as hydroelectric power, have been excluded as it is not a likely renewable energy source in the Territory geographical landscape. While geothermal energy may become more feasible over the longer term, it is not identified as an immediate priority in the Territory.

Biogas is a mixture of gases, predominately methane and carbon dioxide, naturally produced from the decomposition of organic waste. When organic matter is broken down in an anaerobic environment, it releases a blend of gases that can be used as a feedstock for hydrogen energy. This form of green hydrogen, is a carbon-neutral process, and the carbon dioxide byproduct can be captured and used for other industrial purposes (not detailed in this graphic).

All water used in hydrogen production in the Territory must be sustainably sourced and managed and will be subject to assessment under the Water Act 1992, including licensing and extraction.

In terms of efficiency, it is more likely that the Territory will import the carbon dioxide required to synthesise low carbon liquid fuels, which is included under the feedstock section of this graphic.



## Producing

Electrolysis produces pure hydrogen and oxygen. The oxygen byproduct from producing green hydrogen represents an additional opportunity with value for use in industry, which has not been explored in this graphic.

Depending on the source of methane used as feedstock, both steam methane reforming and auto-thermal reforming can be classified as blue or green hydrogen production. Auto-thermal reforming has not yet been produced on a large scale.

## Processing

Transportation of hydrogen applies to the entire processing stage, as different forms may be used at most supply chain stages.

Purification is only required after processing methane into hydrogen to remove carbon monoxide from the resulting synthetic gas (or syngas). Water is also required in the liquefaction and compression of hydrogen for cooling, although not represented in this graphic.

While the technology currently exists, liquefaction is scheduled later on the timeline to align with the anticipated timing of hydrogen production in exportable quantities.

Short-term storage methods are expected to be used in the near future to facilitate immediate production and domestic decarbonisation. Geological and solid-state storage may come into play once larger quantities of hydrogen are being produced.

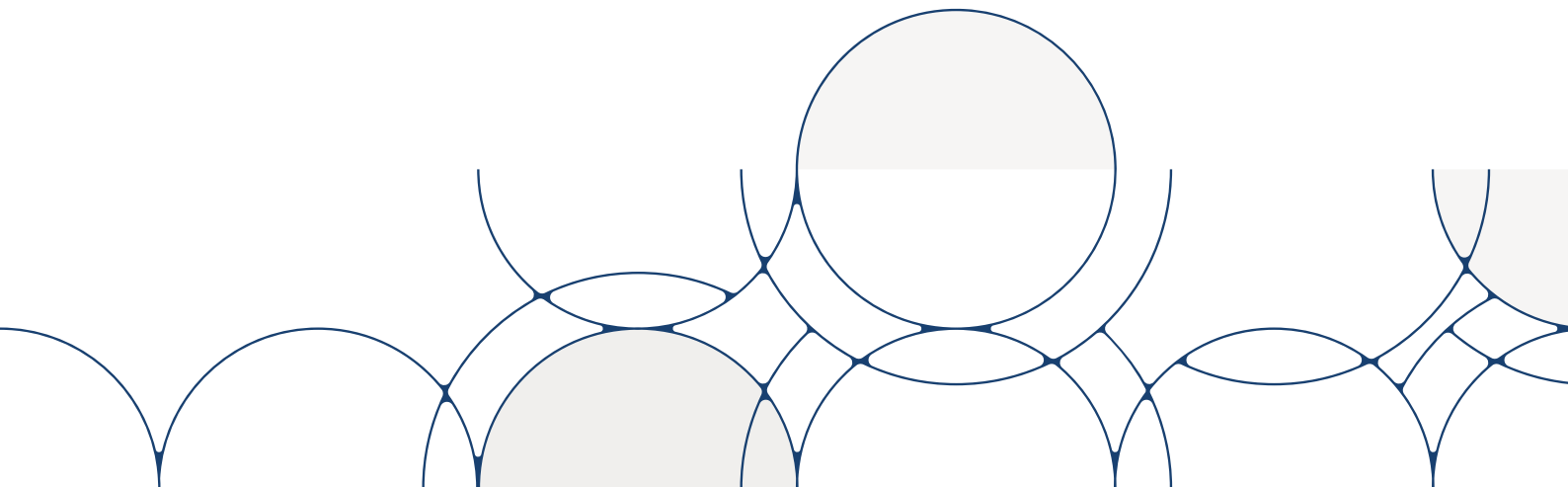
## Using

The Territory hydrogen industry will likely focus initially on domestic decarbonisation uses before generating exportable volumes.

**Power generation, as well as a number of industrial applications such as ammonia, fertilisers, explosives and low carbon liquid fuels all present significant opportunities for the Territory to decarbonise domestic markets through the hydrogen industry.**

Hydrogen can assist with the decarbonisation of domestic transport, including freight trains and trucks, passenger trains and other passenger vehicles, as well as 'return to base' vehicles such as buses and waste collection.

A number of viable future industries were excluded from this graphic in the interests of prioritising those most immediately likely for development. For example, there are potential opportunities for other future green industries, including green metals.



# Capability Overview and Index

## Renewable Energy

### Solar Farm

CAPABILITY	NT CAPABILITY	PAGE
CSP Systems	-	22
Solar Farm Construction	6	22

CAPABILITY	NT CAPABILITY	PAGE
Solar PV Module Installation	29	22
Solar PV Systems	6	22

### Wind Farm

CAPABILITY	NT CAPABILITY	PAGE
Installation and Commissioning	2	23
Rotor Blades - Supply	-	23
Tower - Supply	-	23

CAPABILITY	NT CAPABILITY	PAGE
Wind Turbine - Maintenance	3	23
Wind Turbine - Supply	-	23

## Water Services

CAPABILITY	NT CAPABILITY	PAGE
Bore Services	8	24
Deionised Water Polisher	3	24
Firewater Pumps	12	24
Hydraulic Services	56	24

CAPABILITY	NT CAPABILITY	PAGE
Pumping Systems	38	26
Reverse Osmosis Plant	3	26
Valve Maintenance	16	26
Water Treatment Products	19	26

## Construction and Maintenance

### Construction and Civil

CAPABILITY	NT CAPABILITY	PAGE
Building Structure - Roofing	55	27
Bulk Earth Works	54	27
Civil Construction - Roads	62	27
Concrete (major)	22	28
Concrete Batching Plant	41	28
Concrete Precast	6	28
Desalination Plant Construction	2	28
Head/Managing Contractor	8	29
Heavy and Civil Engineering Construction	24	29
HVDC Overhead Transmission Line	10	29

CAPABILITY	NT CAPABILITY	PAGE
Lining System	3	29
Modular Buildings	19	31
Non-Process Infrastructure (NPI) Buildings	71	31
Permanent Fencing	39	31
Piling Works	13	31
Reinforcing Steel Fix	38	32
Remote Camps	10	32
Scaffolding	15	32
Temporary Fencing	16	32
Weighbridge Systems	2	33

## Corrosion Control

CAPABILITY	NT CAPABILITY	PAGE
Abrasive Blasting and Coatings	22	33
Cathodic Protection	11	33

CAPABILITY	NT CAPABILITY	PAGE
Industrial Painting	18	33

## Fabrication

CAPABILITY	NT CAPABILITY	PAGE
Pressure Vessels	14	35
Reactor Vessels	-	35
Structural Mechanical Piping	18	35

CAPABILITY	NT CAPABILITY	PAGE
Structural Steel Erection	23	35
Welding Services	35	36

## Facility Services

CAPABILITY	NT CAPABILITY	PAGE
Emergency Response Services	9	36

CAPABILITY	NT CAPABILITY	PAGE
Onsite Medical Services	8	36

## Fire Detection, Protection and Firefighting Systems

CAPABILITY	NT CAPABILITY	PAGE
Fire Protection Services	31	36

CAPABILITY	NT CAPABILITY	PAGE
Fire Protection Systems and Components	15	37

## Mechanical

CAPABILITY	NT CAPABILITY	PAGE
Compression Systems	8	37
Condition Monitoring	10	37
Generators Systems	22	38
Heavy Mechanical Servicing	30	38

CAPABILITY	NT CAPABILITY	PAGE
HVAC, Lagging and Structural Components	27	38
Hydraulic Machinery Maintenance	23	38
Processing Plant Equipment	11	39

## Vehicles, Machinery and Equipment

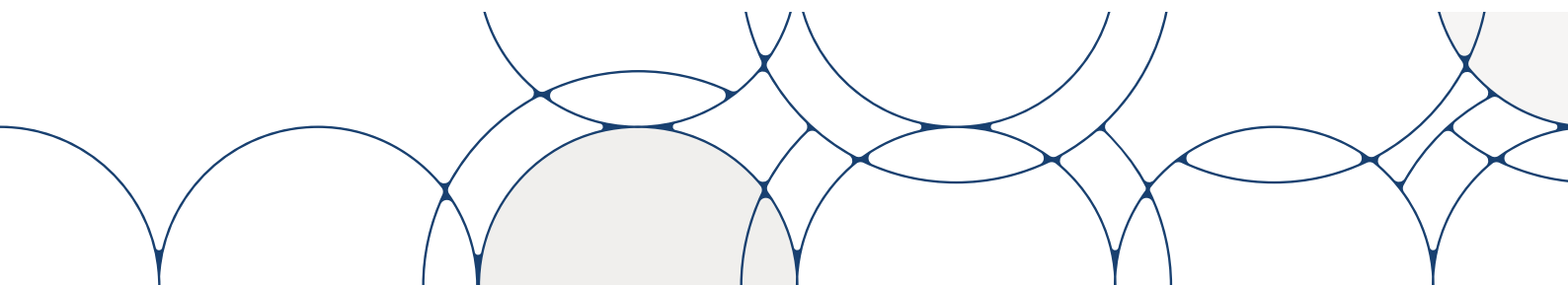
CAPABILITY	NT CAPABILITY	PAGE
Engines - Generators	18	39
Heavy Machinery Hire	26	39

CAPABILITY	NT CAPABILITY	PAGE
Plant Equipment Hire	15	39
Water Truck	11	40

## Waste Management

CAPABILITY	NT CAPABILITY	PAGE
Waste Collection, Treatment and Disposal	27	40

CAPABILITY	NT CAPABILITY	PAGE
Wastewater Treatment (including brine management)	17	40



# Hydrogen Production

## Chemical Processing

CAPABILITY	NT CAPABILITY	PAGE
Biogas Supply	1	41
Biomass Gasification, Methanation, Pyrolysis, Auto Thermal Reforming, Steam Reforming	-	41

CAPABILITY	NT CAPABILITY	PAGE
Cryogenic Separation	-	41
Membrane Separation	1	41
Pressure Swing Adsorption Unit (PSA)	1	42

## Control and Automation

CAPABILITY	NT CAPABILITY	PAGE
Instruments - Anemometer and Wind Vanes	-	42
Instruments - Chemical Analysers including Gas Detectors	6	43

CAPABILITY	NT CAPABILITY	PAGE
Instruments - Meters	18	43
Instruments - Sensors, probes and spectrometers	18	43

## Cooling

CAPABILITY	NT CAPABILITY	PAGE
Cooling Unit	18	43

## Electrical and Communications

CAPABILITY	NT CAPABILITY	PAGE
Battery Supply	11	44
Battery System Installation and Maintenance	14	44
Cabling Services	58	44
Control Systems	37	44
Electrical Panels and Switchgear	59	45

CAPABILITY	NT CAPABILITY	PAGE
IT and Communication Systems	36	45
Power Transmission and Distribution	21	45
Security Systems	19	47
Site Electrical Infrastructure	61	47
Substations and Transformers	16	47
Temporary Power Supply	16	47

## Electrolyser

CAPABILITY	NT CAPABILITY	PAGE
Electrolyser and Cell Stack Supply	-	48

CAPABILITY	NT CAPABILITY	PAGE
Rectifier	4	48

## Heat

CAPABILITY	NT CAPABILITY	PAGE
Burners	-	48
Heat Exchangers	-	48

CAPABILITY	NT CAPABILITY	PAGE
Process Heaters, Immersion Heaters, Superheaters	-	48



## Professional and Technical Services

CAPABILITY	NT CAPABILITY	PAGE	CAPABILITY	NT CAPABILITY	PAGE
Architectural Services	15	50	Pipeline Maintenance	10	52
Concrete Testing	8	50	Quality Control/Quality Assurance (QA/QC)	17	53
Drone Services	30	50	Security Services	23	53
Engineering Services	33	50	Signage	15	53
Environmental Consultancy Services	29	51	Site Survey	25	53
Geotechnical Services	22	51	Stakeholder Engagement	34	54
Groundwater Modelling	17	51	Temporary Work Enclosures	7	54
Guarantee of Origin	-	51	Traditional Owner Engagement	18	55
Laboratory Services	8	52	Training and Licencing	20	55
Labour Hire/Recruitment Services	23	52			
Materials Testing	18	52			

## Common Elements Supply

CAPABILITY	NT CAPABILITY	PAGE	CAPABILITY	NT CAPABILITY	PAGE
Aluminium	6	56	Heat Transfer Fluids	5	60
Atmospheric Water Generation Unit	-	56	High-Pressure Pipe	10	60
Bulk Electrical Supplies	7	56	Low-Pressure Pipe	21	61
Cable Trays	8	56	Packing	-	61
Cathodes/Anodes	-	57	Personal Protective Equipment (PPE)	32	61
Chemical Suppliers	4	57	Pipe Fittings and Supports	12	61
Columns	-	57	Pumps	14	63
Compressors	6	57	Quarry Products	28	63
Concrete Supply	30	58	Silencers/Hoods	5	63
Dampers	7	58	Silicone Hose	1	63
Ducting	12	58	Specialised Metals	-	64
Fasteners	25	58	Steel - Reinforcing	6	64
Filters	9	59	Steel - Structural	5	65
Gas Dehydrators	-	59	Tanks - Gas (including Oxygen, CO <sub>2</sub> and Helium)	8	65
Gaskets	12	59	Tanks - Water	11	65
Glass Reinforced Plastic	4	59	Valves	30	65

## Transport and Logistics

CAPABILITY	NT CAPABILITY	PAGE	CAPABILITY	NT CAPABILITY	PAGE
Air Services	19	66	Pipeline Network Owner/Transporter	3	67
Freight - Rail	11	66	Shipping Containers	5	67
Freight - Road	36	66	Warehousing and Storage Services	29	67
Freight - Sea	17	66	Water Cartage	13	67

# How to Read this Report

This report employs a three-tiered categorisation system to organise and analyse identified capabilities within the supply chain. The structure is defined as follows:

- High level Category:** Seven categories representing broad themes and industries relevant to the hydrogen industry: Renewable Energy, Water Services, Construction and Maintenance, Hydrogen Production, Professional and Technical Services, Common Elements Supply, and Transport and Logistics.
- Trade Sub-category:** Each high-level category is divided into smaller trade-specific subcategories that focus on specific activities. In some instances, the high-level category and trade subcategory are the same.
- Capabilities:** At the most granular level, this report identifies and maps 150 distinct capabilities.



**Total Businesses**

Number of capable Territory businesses in the scope  
Capability: Modest 1-5 | Moderate 6-10 | High 11+ businesses



**Business Scale**

Turnover of capable Territory businesses  
Turnover: Small \$1m-\$10m | Medium \$10m-\$20m | Large \$20m+



**Business Size**

Employee numbers of capable Territory businesses  
Employees: Small 5-19 | Medium 20-199 | Large 200+



**Aboriginal Owned**

Number of Majority Aboriginal owned capable Territory businesses



**National Capability**

YES

Territory capability was found to be absent or insufficient; however, sufficient capability exists at a national level within Australia.



**National Capability**

NO

No Territory capability was identified, and capability at a national level across Australia was also found to be insufficient.

*The absence of a "National Capability" image indicates that sufficient capability exists within the Territory to satisfy the package's requirements, therefore not necessitating an assessment at the national level.*

- Regional Diversity:** The location of businesses are identified by local government and unincorporated areas. Businesses can be located across multiple regions and the areas listed for each capability represent the total number of business locations.



# Renewable Energy

## Solar Farm

### CSP Systems

ICN mapped four distinct capabilities for CSP, which were combined for display. These include the supply of reflector systems, solar thermal power towers, dish engine systems (azimuth and tilt angle trackers, concentrator shells, Stirling engines), and trough systems (troughs, concentrators and heat storage mediums such as molten salt or silicon).

Total NT Businesses	Business Scale	Business Size	Aboriginal Owned	National Capability
No capability identified	-	-	-	NO

### Solar Farm Construction

Assembly and erection of PV mounting frames, installation of solar trackers, and related construction services.

Total NT Businesses	Business Scale	Business Size	Aboriginal Owned	National Capability
6	S: 2, M: -, L: 4	S: 1, M: 2, L: 3	1	YES

**Regional Diversity:** Darwin Municipality (3), Northern Territory Rates Act Area (3)

### Solar PV Module Installation

Services for PV panel connecting, installation and fit-out of PV modules, PV panel mounting, and tracker installation.

Total NT Businesses	Business Scale	Business Size	Aboriginal Owned
29	S: 22, M: 4, L: 3	S: 18, M: 10, L: 1	2

**Regional Diversity:** Darwin Municipality (13), Palmerston Municipality (7), Northern Territory Rates Act Area (4), Alice Springs Municipality (3), Litchfield Municipality (3), Katherine Municipality (2), Un-Incorporated (Nhulunbuy) Area (1), West Arnhem Region (1)

### Solar PV Systems

Supply of solar panels, solar control equipment (inverters, charge controllers), and related components.

Total NT Businesses	Business Scale	Business Size	Aboriginal Owned	National Capability
6	S: 3, M: 1, L: 2	S: 2, M: 2, L: 2	-	YES

**Regional Diversity:** Darwin Municipality (5), Katherine Municipality (1), Palmerston Municipality (1)

## Wind Farm

### Installation and Commissioning

The installation and commissioning of wind turbines, including the foundation, tower, nacelle, rotor blades, and electrical components.

Total NT Businesses	Business Scale			Business Size			Aboriginal Owned	National Capability
	S	M	L	S	M	L		
2	-	-	2	-	-	2	-	YES

**Regional Diversity:** Darwin Municipality (1), Northern Territory Rates Act Area (1)

### Rotor Blades - Supply

Supply of rotor blades for wind turbines.

Total NT Businesses	Business Scale	Business Size	Aboriginal Owned	National Capability
No capability identified	-	-	-	NO

### Tower - Supply

Supply of wind turbine towers, which support the nacelle and rotor blades and allow the turbine to capture wind at higher altitudes where it is stronger and more consistent.

Total NT Businesses	Business Scale	Business Size	Aboriginal Owned	National Capability
No capability identified	-	-	-	NO

### Wind Turbine - Maintenance

Maintenance of wind turbines, including monitoring for predictive maintenance.

Total NT Businesses	Business Scale			Business Size			Aboriginal Owned	National Capability
	S	M	L	S	M	L		
3	-	-	3	-	-	3	-	YES

**Regional Diversity:** Darwin Municipality (1), Litchfield Municipality (1), Northern Territory Rates Act Area (1)

### Wind Turbine - Supply

Supply of wind turbines.

Total NT Businesses	Business Scale	Business Size	Aboriginal Owned	National Capability
No capability identified	-	-	-	NO

**BUSINESS SCALE = TURNOVER:** Small <\$1m - \$10m | Medium \$10m - \$20m | Large >\$20m  
**BUSINESS SIZE = EMPLOYEES:** Small 5 - 19 | Medium 20 - 199 | Large 200+  
**CAPABILITY = NUMBER OF CAPABLE BUSINESSES:** Modest 1-5 | Moderate 6-10 | High 11+

# Water Services

## Bore Services

Construction and drilling of water bores required for ground water access and sampling.

 <b>Total NT Businesses</b>	 <b>Business Scale</b>			 <b>Business Size</b>			 <b>Aboriginal Owned</b>
		S	M	L	S	M	L
8	5	-	3	4	4	-	-

**Regional Diversity:** Litchfield Municipality (4), Alice Springs Municipality (3), Central Desert Region (1), Macdonnell Region (1), Palmerston Municipality (1)

## Deionised Water Polisher

Supply and install of deionised water polisher used to remove impurities and minerals from the water that is being used as a feedstock for the electrolysis process. Can consist of a series of filters and ion exchange resins that remove dissolved salts, metals, and other impurities from the water.

 <b>Total NT Businesses</b>	 <b>Business Scale</b>			 <b>Business Size</b>			 <b>Aboriginal Owned</b>	 <b>National Capability</b>
		S	M	L	S	M	L	
3	2	1	-	2	1	-	-	YES

**Regional Diversity:** Darwin Municipality (1), Litchfield Municipality (1), Northern Territory Rates Act Area (1)

## Firewater Pumps

Supply and delivery of skid mounted fire pump systems complete with electric pump/diesel pump/jockey pump and control panel.

 <b>Total NT Businesses</b>	 <b>Business Scale</b>			 <b>Business Size</b>			 <b>Aboriginal Owned</b>
		S	M	L	S	M	L
12	6	2	4	3	8	1	1

**Regional Diversity:** Darwin Municipality (8), Palmerston Municipality (3), Alice Springs Municipality (1), Northern Territory Rates Act Area (1)

## Hydraulic Services

Manufacture/supply/install hydraulic services along with associated works for large-scale projects and building infrastructure. Scope includes potable water reticulation, drainage systems, water infrastructure installations, connections to pumping stations, and sewer pressure mains from station to termination point.

 <b>Total NT Businesses</b>	 <b>Business Scale</b>			 <b>Business Size</b>			 <b>Aboriginal Owned</b>
		S	M	L	S	M	L
56	29	7	20	24	23	9	7

**Regional Diversity:** Darwin Municipality (21), Litchfield Municipality (15), Alice Springs Municipality (8), Palmerston Municipality (7), Katherine Municipality (3), Northern Territory Rates Act Area (2), Un-Incorporated (Elrundie) Area (2), East Arnhem Region (1), Un-Incorporated (Nhulunbuy) Area (1)

**BUSINESS SCALE = TURNOVER:** Small <\$1m - \$10m | Medium \$10m - \$20m | Large >\$20m

**BUSINESS SIZE = EMPLOYEES:** Small 5 - 19 | Medium 20 - 199 | Large 200+

**CAPABILITY = NUMBER OF CAPABLE BUSINESSES:** Modest 1-5 | Moderate 6-10 | High 11+



## Pumping Systems

Installation, repair and maintenance of pumping systems including filters, aerators and other associated components.

 <b>Total NT Businesses</b>	 <b>Business Scale</b>			 <b>Business Size</b>			 <b>Aboriginal Owned</b>
	S	M	L	S	M	L	
38	18	7	13	12	20	6	2

**Regional Diversity:** Darwin Municipality (15), Palmerston Municipality (9), Litchfield Municipality (8), Alice Springs Municipality (7), Northern Territory Rates Act Area (2), Barkly Region (1), Central Desert Region (1), Katherine Municipality (1), Macdonnell Region (1)

## Reverse Osmosis Plant

Supply and delivery of a containerised reverse osmosis plant.

 <b>Total NT Businesses</b>	 <b>Business Scale</b>			 <b>Business Size</b>			 <b>Aboriginal Owned</b>	 <b>National Capability</b>
	S	M	L	S	M	L		
3	-	1	2	-	2	1	-	YES

**Regional Diversity:** Darwin Municipality (1), Northern Territory Rates Act Area (1), Palmerston Municipality (1)

## Valve Maintenance

Provision, repair and maintenance of valves for the regulation of fluids.

 <b>Total NT Businesses</b>	 <b>Business Scale</b>			 <b>Business Size</b>			 <b>Aboriginal Owned</b>
	S	M	L	S	M	L	
16	5	4	7	5	6	5	-

**Regional Diversity:** Darwin Municipality (8), Northern Territory Rates Act Area (4), Palmerston Municipality (4), Alice Springs Municipality (2), Barkly Region (1), Katherine Municipality (1), Litchfield Municipality (1)

## Water Treatment Products

Supply of water treatment products including filtration and purification systems, and chemical treatment agents. Other examples include reverse osmosis systems, ion exchange resins, activated carbon filters, and disinfectants such as chlorine and ozone.

 <b>Total NT Businesses</b>	 <b>Business Scale</b>			 <b>Business Size</b>			 <b>Aboriginal Owned</b>
	S	M	L	S	M	L	
19	7	3	9	7	7	5	2

**Regional Diversity:** Darwin Municipality (11), Litchfield Municipality (3), Northern Territory Rates Act Area (3), Palmerston Municipality (2), Alice Springs Municipality (1)

# Construction And Maintenance

## Construction and Civil

### Building Structure - Roofing

Roof fixing and application of roof coatings.

 <b>Total NT Businesses</b>	 <b>Business Scale</b>			 <b>Business Size</b>			 <b>Aboriginal Owned</b>
	S	M	L	S	M	L	
55	31	8	16	20	26	9	12

**Regional Diversity:** Darwin Municipality (23), Alice Springs Municipality (15), Palmerston Municipality (7), Barkly Region (5), Litchfield Municipality (5), Katherine Municipality (4), Northern Territory Rates Act Area (4), Un-Incorporated (Nhulunbuy) Area (4), Central Desert Region (1), East Arnhem Region (1), Roper Gulf Region (1), Victoria Daly Region (1), West Arnhem Region (1)

### Bulk Earth Works

Site clearing and grubbing, trenching, drainage, erosion and sediment control, fire breaks.

 <b>Total NT Businesses</b>	 <b>Business Scale</b>			 <b>Business Size</b>			 <b>Aboriginal Owned</b>
	S	M	L	S	M	L	
54	21	8	25	14	29	11	11

**Regional Diversity:** Darwin Municipality (22), Litchfield Municipality (12), Alice Springs Municipality (5), Palmerston Municipality (5), Katherine Municipality (5), Northern Territory Rates Act Area (4), Un-Incorporated (Elrundie) Area (2), Un-Incorporated (Marrakai-Douglas Area (2), Barkly Region (1), Coomalie Shire (1), Roper Gulf Region (1), Un-Incorporated (Nhulunbuy) Area (1), Victoria Daly Region (1), West Arnhem Region (1)

### Civil Construction - Roads

Construction of roads and associated groundworks including bitumen and asphalt services.

 <b>Total NT Businesses</b>	 <b>Business Scale</b>			 <b>Business Size</b>			 <b>Aboriginal Owned</b>
	S	M	L	S	M	L	
62	28	8	26	21	31	10	13

**Regional Diversity:** Darwin Municipality (20), Litchfield Municipality (13), Alice Springs Municipality (10), Northern Territory Rates Act Area (8), Palmerston Municipality (8), Katherine Municipality (4), Barkly Region (3), Un-Incorporated (Marrakai-Douglas Area (2), Coomalie Shire (1), East Arnhem Region (1), Roper Gulf Region (1), Un-Incorporated (Alyangula) Area (1), Un-Incorporated (Elrundie) Area (1), Victoria Daly Region (1), West Arnhem Region (1)

**BUSINESS SCALE = TURNOVER:** Small <\$1m - \$10m | Medium \$10m - \$20m | Large >\$20m  
**BUSINESS SIZE = EMPLOYEES:** Small 5 - 19 | Medium 20 - 199 | Large 200+  
**CAPABILITY = NUMBER OF CAPABLE BUSINESSES:** Modest 1-5 | Moderate 6-10 | High 11+

## Concrete (Major)

Large concrete pouring and finishing greater than \$10M in value. Also includes the installation of formwork.

 <b>Total NT Businesses</b>	 <b>Business Scale</b>			 <b>Business Size</b>			 <b>Aboriginal Owned</b>
	S	M	L	S	M	L	
22	4	3	15	1	16	5	2

**Regional Diversity:** Darwin Municipality (13), Alice Springs Municipality (4), Litchfield Municipality (4), Northern Territory Rates Act Area (2), Palmerston Municipality (2), Katherine Municipality (1), West Arnhem Region (1)

## Concrete Batching Plant

Installation and operation of site batching plants.

 <b>Total NT Businesses</b>	 <b>Business Scale</b>			 <b>Business Size</b>			 <b>Aboriginal Owned</b>
	S	M	L	S	M	L	
41	11	12	18	9	24	8	10

**Regional Diversity:** Darwin Municipality (15), Alice Springs Municipality (9), Katherine Municipality (6), Palmerston Municipality (6), Litchfield Municipality (5), Un-Incorporated (Marrakai-Douglas Area (4), Barkly Region (3), Northern Territory Rates Act Area (3), East Arnhem Region (2), West Arnhem Region (2), Central Desert Region (1), Macdonnell Region (1), Roper Gulf Region (1), Un-Incorporated (Alyangula) Area (1), Un-Incorporated (Elrundie) Area (1)

## Concrete Precast


Supply of precast products such as arches, panels, beams, structures, walling systems, prestressed units, culverts, electrical pits, slabs, footings.

 <b>Total NT Businesses</b>	 <b>Business Scale</b>			 <b>Business Size</b>			 <b>Aboriginal Owned</b>
	S	M	L	S	M	L	
6	2	2	2	1	4	1	1

**Regional Diversity:** Darwin Municipality (3), Palmerston Municipality (2), Northern Territory Rates Act Area (1)

## Desalination Plant Construction

Construction of desalination plants.

 <b>Total NT Businesses</b>	 <b>Business Scale</b>			 <b>Business Size</b>			 <b>Aboriginal Owned</b>	 <b>National Capability</b>
	S	M	L	S	M	L		
2	-	-	2	-	1	1	-	YES

**Regional Diversity:** Darwin Municipality (1), Northern Territory Rates Act Area (1)

## Head/Managing Contractor

Services including project planning, procurement, engineering and design, construction management, commissioning and start-up, and health, safety, and environmental management.

 <b>Total NT Businesses</b>	 <b>Business Scale</b>			 <b>Business Size</b>			 <b>Aboriginal Owned</b>	 <b>National Capability</b>
	S	M	L	S	M	L		
8	-	-	8	-	1	7	-	YES

**Regional Diversity:** Darwin Municipality (5), Palmerston Municipality (2), Alice Springs Municipality (1), Northern Territory Rates Act Area (1)

## Heavy and Civil Engineering Construction

Heavy and civil engineering construction including dams, irrigation systems, water/gas supply systems, pipelines, breakwater construction, electrical/communication lines, dredging, sewerage or storm water drainage.

 <b>Total NT Businesses</b>	 <b>Business Scale</b>			 <b>Business Size</b>			 <b>Aboriginal Owned</b>
	S	M	L	S	M	L	
24	3	3	18	-	15	9	2

**Regional Diversity:** Darwin Municipality (12), Northern Territory Rates Act Area (5), Palmerston Municipality (4), Litchfield Municipality (3), Alice Springs Municipality (2), Un-Incorporated (Elrondie) Area (2), Katherine Municipality (1), Un-Incorporated (Marrakai-Douglas Area (1))

## HVDC Overhead Transmission Line

Construction of foundations and structure of high voltage transmission poles as well as stringing of cables.

 <b>Total NT Businesses</b>	 <b>Business Scale</b>			 <b>Business Size</b>			 <b>Aboriginal Owned</b>
	S	M	L	S	M	L	
10	3	1	6	2	5	3	1

**Regional Diversity:** Northern Territory Rates Act Area (4), Darwin Municipality (3), Palmerston Municipality (2), Alice Springs Municipality (1), Katherine Municipality (1), Litchfield Municipality (1)

## Lining System

Installation of commercial plastic linings for primary and secondary containment and protection of water pits.

 <b>Total NT Businesses</b>	 <b>Business Scale</b>			 <b>Business Size</b>			 <b>Aboriginal Owned</b>	 <b>National Capability</b>
	S	M	L	S	M	L		
3	-	-	3	-	-	3	-	YES

**Regional Diversity:** Darwin Municipality (2), Northern Territory Rates Act Area (1)

**BUSINESS SCALE = TURNOVER:** Small <\$1m - \$10m | Medium \$10m - \$20m | Large >\$20m

**BUSINESS SIZE = EMPLOYEES:** Small 5 - 19 | Medium 20 - 199 | Large 200+

**CAPABILITY = NUMBER OF CAPABLE BUSINESSES:** Modest 1-5 | Moderate 6-10 | High 11+

Trenching and  
bulk earth works



## Modular Buildings

Manufacture or supply of temporary structures, modular camp buildings including mess and ablutions.

 <b>Total NT Businesses</b>	 <b>Business Scale</b>			 <b>Business Size</b>			 <b>Aboriginal Owned</b>
	S	M	L	S	M	L	
19	1	3	15	1	11	7	1

**Regional Diversity:** Darwin Municipality (8), Northern Territory Rates Act Area (5), Alice Springs Municipality (4), Palmerston Municipality (4), Litchfield Municipality (3), Katherine Municipality (1), Macdonnell Region (1), Un-Incorporated (Elrundi) Area (1)

## Non-Process Infrastructure (NPI) Buildings

Administration offices, security, first aid, workshops, vehicle wash down, tyre change, lubricant storage.

 <b>Total NT Businesses</b>	 <b>Business Scale</b>			 <b>Business Size</b>			 <b>Aboriginal Owned</b>
	S	M	L	S	M	L	
71	31	17	23	24	39	8	14

**Regional Diversity:** Darwin Municipality (34), Alice Springs Municipality (16), Litchfield Municipality (10), Palmerston Municipality (7), Katherine Municipality (6), Northern Territory Rates Act Area (6), Barkly Region (4), East Arnhem Region (3), Un-Incorporated (Nhulunbuy) Area (2), West Arnhem Region (2), Roper Gulf Region (1)

## Permanent Fencing

Construction of perimeter fencing systems.

 <b>Total NT Businesses</b>	 <b>Business Scale</b>			 <b>Business Size</b>			 <b>Aboriginal Owned</b>
	S	M	L	S	M	L	
39	31	2	6	24	15	-	9

**Regional Diversity:** Alice Springs Municipality (13), Darwin Municipality (12), Litchfield Municipality (6), Katherine Municipality (5), Palmerston Municipality (3), Barkly Region (1), East Arnhem Region (1), Northern Territory Rates Act Area (1), Un-Incorporated (Nhulunbuy) Area (1), West Arnhem Region (1)

## Piling Works

Mechanical installation of stainless steel piles directly driven to the ground for solar tracking systems.

 <b>Total NT Businesses</b>	 <b>Business Scale</b>			 <b>Business Size</b>			 <b>Aboriginal Owned</b>
	S	M	L	S	M	L	
13	2	-	11	1	5	7	1

**Regional Diversity:** Darwin Municipality (6), Litchfield Municipality (3), Northern Territory Rates Act Area (3), Alice Springs Municipality (2), Palmerston Municipality (1)

**BUSINESS SCALE = TURNOVER:** Small <\$1m - \$10m | Medium \$10m - \$20m | Large >\$20m

**BUSINESS SIZE = EMPLOYEES:** Small 5 - 19 | Medium 20 - 199 | Large 200+

**CAPABILITY = NUMBER OF CAPABLE BUSINESSES:** Modest 1-5 | Moderate 6-10 | High 11+

## Reinforcing Steel Fix

Reinforcing steel fix for all diameters including scheduling, marking plans, cutting and bending, stock and cut lengths, stirrups, spirals, mesh, tie wire, couplers, and dowels.

 <b>Total NT Businesses</b>	 <b>Business Scale</b>			 <b>Business Size</b>			 <b>Aboriginal Owned</b>
	S	M	L	S	M	L	
38	28	5	5	22	14	2	5

**Regional Diversity:** Darwin Municipality (16), Litchfield Municipality (10), Alice Springs Municipality (5), Palmerston Municipality (5), Katherine Municipality (2), Northern Territory Rates Act Area (2), Barkly Region (1), Roper Gulf Region (1), Un-Incorporated (Elrondie) Area (1)

## Remote Camps

Installation of temporary facilities including offices, crib rooms, accommodation, toilet blocks, and remote camps.

 <b>Total NT Businesses</b>	 <b>Business Scale</b>			 <b>Business Size</b>			 <b>Aboriginal Owned</b>
	S	M	L	S	M	L	
10	1	-	9	1	5	4	1

**Regional Diversity:** Northern Territory Rates Act Area (4), Darwin Municipality (3), Alice Springs Municipality (2), Litchfield Municipality (2), Katherine Municipality (1), Palmerston Municipality (1), Victoria Daly Region (1)

## Scaffolding

Supply and install scaffolding systems.

 <b>Total NT Businesses</b>	 <b>Business Scale</b>			 <b>Business Size</b>			 <b>Aboriginal Owned</b>
	S	M	L	S	M	L	
15	4	1	10	3	6	6	2

**Regional Diversity:** Darwin Municipality (8), Northern Territory Rates Act Area (6), Alice Springs Municipality (1), Barkly Region (1), Litchfield Municipality (1), Palmerston Municipality (1)

## Temporary Fencing

Temporary fencing services.

 <b>Total NT Businesses</b>	 <b>Business Scale</b>			 <b>Business Size</b>			 <b>Aboriginal Owned</b>
	S	M	L	S	M	L	
16	8	-	8	6	6	4	3

**Regional Diversity:** Darwin Municipality (6), Alice Springs Municipality (3), Katherine Municipality (3), Litchfield Municipality (3), Northern Territory Rates Act Area (1), Palmerston Municipality (1), Un-Incorporated (Elrondie) Area (1)

## Weighbridge Systems

Design and construction of a seven-deck weighbridge suitable for triple road trains, including all instrumentation.

Total NT Businesses	Business Scale			Business Size			Aboriginal Owned	National Capability
	S	M	L	S	M	L		
2	1	-	1	1	1	-	-	YES

**Regional Diversity:** Darwin Municipality (2)

## Corrosion Control

### Abrasive Blasting And Coatings

Removal of existing paint and coatings by sand blasting or other related methods.

Total NT Businesses	Business Scale			Business Size			Aboriginal Owned
	S	M	L	S	M	L	
22	6	3	13	3	10	9	1

**Regional Diversity:** Darwin Municipality (7), Northern Territory Rates Act Area (7), Alice Springs Municipality (3), Litchfield Municipality (3), Palmerston Municipality (3), Katherine Municipality (1), Un-Incorporated (Nhulunbuy) Area (1)

### Cathodic Protection

Application of sacrificial metals and specialist coatings to protect metallic structures from corrosion.

Total NT Businesses	Business Scale			Business Size			Aboriginal Owned
	S	M	L	S	M	L	
11	3	-	8	2	3	6	-

**Regional Diversity:** Darwin Municipality (6), Northern Territory Rates Act Area (3), East Arnhem Region (1), Litchfield Municipality (1), Palmerston Municipality (1)

### Industrial Painting

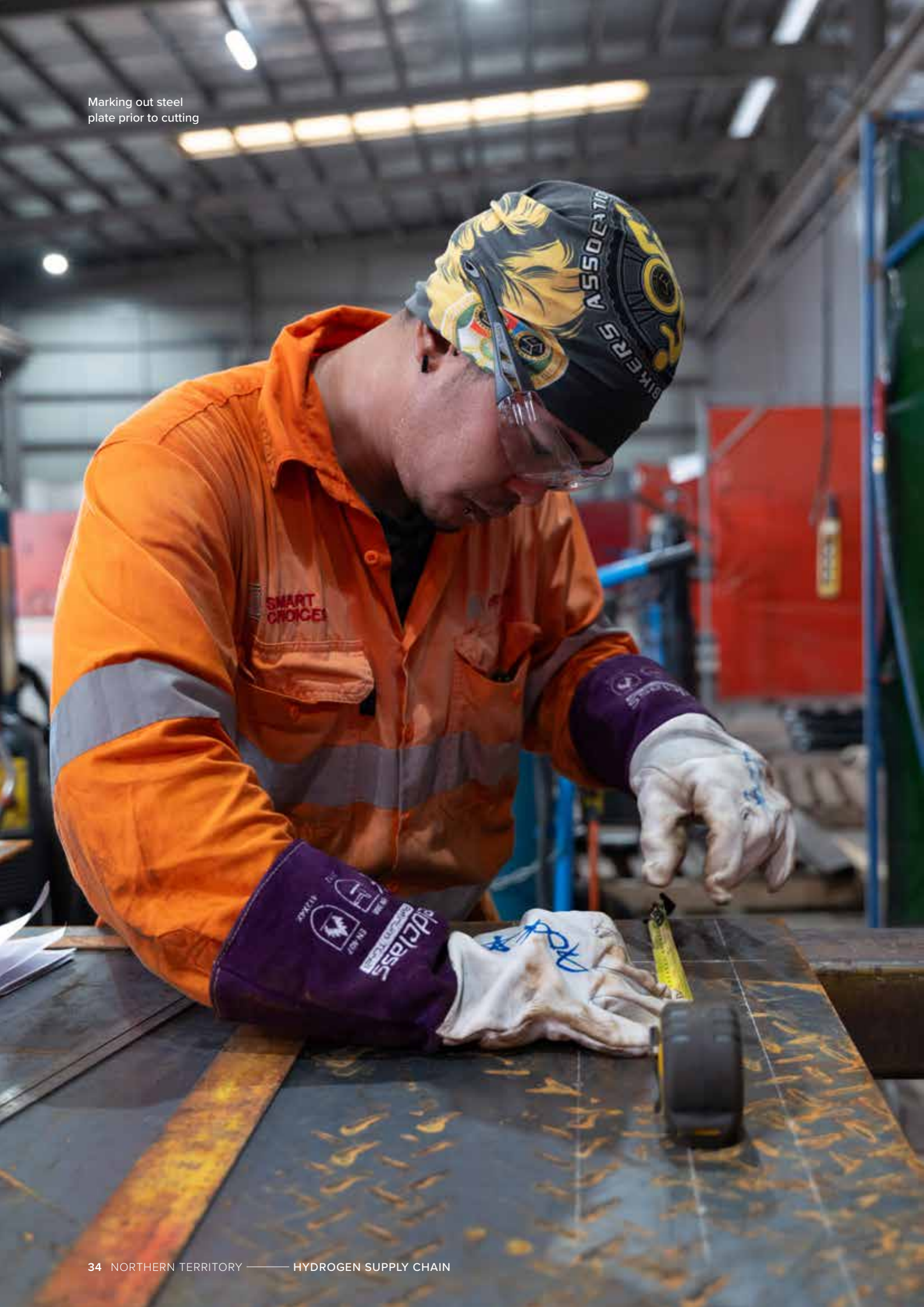
Industrial painting and waterproofing services by mechanical or manual application.

Total NT Businesses	Business Scale			Business Size			Aboriginal Owned
	S	M	L	S	M	L	
18	10	-	8	8	4	6	2

**Regional Diversity:** Darwin Municipality (8), Northern Territory Rates Act Area (4), Alice Springs Municipality (3), Litchfield Municipality (3), Barkly Region (1), Katherine Municipality (1), Palmerston Municipality (1)

**BUSINESS SCALE = TURNOVER:** Small <\$1m - \$10m | Medium \$10m - \$20m | Large >\$20m  
**BUSINESS SIZE = EMPLOYEES:** Small 5 - 19 | Medium 20 - 199 | Large 200+  
**CAPABILITY = NUMBER OF CAPABLE BUSINESSES:** Modest 1-5 | Moderate 6-10 | High 11+

Marking out steel plate prior to cutting



## Fabrication

### Pressure Vessels

Onsite fabrication or repair of containers for the use of gases or liquids at pressures different from the ambient pressure.

 <b>Total NT Businesses</b>	 <b>Business Scale</b>			 <b>Business Size</b>			 <b>Aboriginal Owned</b>
	S	M	L	S	M	L	
14	8	-	6	3	9	2	-

**Regional Diversity:** Darwin Municipality (5), Palmerston Municipality (4), Northern Territory Rates Act Area (3), Litchfield Municipality (2), Alice Springs Municipality (1)

### Reactor Vessels

Fabrication of specialised containers designed to facilitate and control chemical reactions under high pressure and temperature conditions.

 <b>Total NT Businesses</b>	 <b>Business Scale</b>	 <b>Business Size</b>	 <b>Aboriginal Owned</b>	 <b>National Capability</b>
No capability identified	-	-	-	YES

### Structural Mechanical Piping

Installation and maintenance of mechanical piping systems.

 <b>Total NT Businesses</b>	 <b>Business Scale</b>			 <b>Business Size</b>			 <b>Aboriginal Owned</b>
	S	M	L	S	M	L	
18	10	-	8	5	9	4	1

**Regional Diversity:** Darwin Municipality (5), Northern Territory Rates Act Area (5), Palmerston Municipality (4), Alice Springs Municipality (2), Litchfield Municipality (2), Un-Incorporated (Nhulunbuy) Area (1)

### Structural Steel Erection

Fabrication of specialised containers designed to facilitate and control chemical reactions under high pressure and temperature conditions.

 <b>Total NT Businesses</b>	 <b>Business Scale</b>			 <b>Business Size</b>			 <b>Aboriginal Owned</b>
	S	M	L	S	M	L	
23	19	-	4	14	7	2	3

**Regional Diversity:** Darwin Municipality (6), Palmerston Municipality (6), Northern Territory Rates Act Area (5), Litchfield Municipality (3), Alice Springs Municipality (2), Katherine Municipality (1), Un-Incorporated (Nhulunbuy) Area (1)

**BUSINESS SCALE = TURNOVER:** Small <\$1m - \$10m | Medium \$10m - \$20m | Large >\$20m

**BUSINESS SIZE = EMPLOYEES:** Small 5 - 19 | Medium 20 - 199 | Large 200+

**CAPABILITY = NUMBER OF CAPABLE BUSINESSES:** Modest 1-5 | Moderate 6-10 | High 11+

## Welding Services

General welding repairs to metal surfaces and components.

 <b>Total NT Businesses</b>	 <b>Business Scale</b>			 <b>Business Size</b>			 <b>Aboriginal Owned</b>
	S	M	L	S	M	L	
35	26	1	8	21	10	4	2

**Regional Diversity:** Darwin Municipality (11), Palmerston Municipality (9), Northern Territory Rates Act Area (6), Alice Springs Municipality (5), Litchfield Municipality (4), Un-Incorporated (Nhulunbuy) Area (2), Katherine Municipality (1)

## Facility Services

### Emergency Response Services

Emergency medical response including fire rescue.

 <b>Total NT Businesses</b>	 <b>Business Scale</b>			 <b>Business Size</b>			 <b>Aboriginal Owned</b>
	S	M	L	S	M	L	
9	3	-	6	1	3	5	-

**Regional Diversity:** Darwin Municipality (7), Alice Springs Municipality (2), Northern Territory Rates Act Area (2), Katherine Municipality (1)

### Onsite Medical Services

Onsite first aid staff, paramedics, nurses, clinical examination, medication, dispense medicines, and infection control.

 <b>Total NT Businesses</b>	 <b>Business Scale</b>			 <b>Business Size</b>			 <b>Aboriginal Owned</b>
	S	M	L	S	M	L	
8	1	-	7	-	2	6	1

**Regional Diversity:** Darwin Municipality (6), Alice Springs Municipality (2), Northern Territory Rates Act Area (2), Katherine Municipality (1)

## Fire Detection, Protection and Firefighting Systems

### Fire Protection Services

Supply of fire protection services designed to help prevent, detect, and mitigate the effects of fire, including fire risk assessments, installation of fire suppression and alarm systems, fire safety investigations and training.

 <b>Total NT Businesses</b>	 <b>Business Scale</b>			 <b>Business Size</b>			 <b>Aboriginal Owned</b>
	S	M	L	S	M	L	
31	16	1	14	8	15	8	1

**Regional Diversity:** Darwin Municipality (22), Alice Springs Municipality (7), Palmerston Municipality (4), Northern Territory Rates Act Area (3), Barkly Region (1)

## Fire Protection Systems and Components

Supply of components used in fire protection systems including fire detectors and alarms, fire suppression systems, fire extinguishers, emergency lighting and exit signs, smoke control systems, fire doors and fire-resistant construction materials and firefighting equipment.

Total NT Businesses	Business Scale			Business Size			Aboriginal Owned
	S	M	L	S	M	L	
15	2	2	11	2	7	6	-

**Regional Diversity:** Darwin Municipality (11), Alice Springs Municipality (3), Katherine Municipality (3), Northern Territory Rates Act Area (2), Palmerston Municipality (2)

## Mechanical

### Compression Systems

Installation, repairs, and maintenance services to industrial compression systems including construction of compressor stations to increase the pressure of gases to facilitate their transportation through pipelines.

Total NT Businesses	Business Scale			Business Size			Aboriginal Owned
	S	M	L	S	M	L	
8	2	1	5	1	3	4	-

**Regional Diversity:** Darwin Municipality (5), Northern Territory Rates Act Area (2), Litchfield Municipality (1)

### Condition Monitoring

Predictive maintenance and detecting of mechanical faults through vibration, temperature, and other methods.

Total NT Businesses	Business Scale			Business Size			Aboriginal Owned
	S	M	L	S	M	L	
10	2	2	6	1	4	5	-

**Regional Diversity:** Darwin Municipality (5), Northern Territory Rates Act Area (3), Alice Springs Municipality (2), Palmerston Municipality (2), Un-Incorporated (Nhulunbuy) Area (1)



Machining specialty mechanical items

## Generators Systems

Installation, repairs, and maintenance of power generation systems.

 <b>Total NT Businesses</b>	 <b>Business Scale</b>			 <b>Business Size</b>			 <b>Aboriginal Owned</b>
	S	M	L	S	M	L	
22	9	1	12	9	6	7	3

**Regional Diversity:** Darwin Municipality (11), Northern Territory Rates Act Area (5), Alice Springs Municipality (4), Katherine Municipality (2), Palmerston Municipality (2), Barkly Region (1), Litchfield Municipality (1), Un-Incorporated (Nhulunbuy) Area (1)

## Heavy Mechanical Servicing

Repair and maintenance of heavy engines, plant equipment, mechanical systems, and associated components.

 <b>Total NT Businesses</b>	 <b>Business Scale</b>			 <b>Business Size</b>			 <b>Aboriginal Owned</b>
	S	M	L	S	M	L	
30	19	2	9	14	12	4	1

**Regional Diversity:** Darwin Municipality (6), Palmerston Municipality (6), Northern Territory Rates Act Area (5), Alice Springs Municipality (3), Un-Incorporated (Nhulunbuy) Area (3), Katherine Municipality (2), Litchfield Municipality (2), Roper Gulf Region (2), Barkly Region (1), West Arnhem Region (1)

## HVAC, Lagging and Structural Components

Installation and maintenance, of HVAC, lagging (insulation), and structural services.

 <b>Total NT Businesses</b>	 <b>Business Scale</b>			 <b>Business Size</b>			 <b>Aboriginal Owned</b>
	S	M	L	S	M	L	
27	17	3	7	10	12	5	3

**Regional Diversity:** Darwin Municipality (18), Northern Territory Rates Act Area (5), Katherine Municipality (3), Alice Springs Municipality (2), Barkly Region (1), Palmerston Municipality (1)

## Hydraulic Machinery Maintenance

Servicing, installation, repairs, hydraulic flushing of hydraulic drive or transmission powered systems and equipment. Includes supply of hydraulic equipment e.g. hoses and fittings.

 <b>Total NT Businesses</b>	 <b>Business Scale</b>			 <b>Business Size</b>			 <b>Aboriginal Owned</b>
	S	M	L	S	M	L	
23	10	2	11	10	8	5	1

**Regional Diversity:** Darwin Municipality (8), Northern Territory Rates Act Area (7), Alice Springs Municipality (3), Palmerston Municipality (3), Barkly Region (2), Katherine Municipality (1), Litchfield Municipality (1)

## Processing Plant Equipment

Installation and maintenance of plant equipment, processing machinery, conveyors, and associated components.

Total NT Businesses	Business Scale			Business Size			Aboriginal Owned
	S	M	L	S	M	L	
11	4	-	7	1	4	6	-

**Regional Diversity:** Northern Territory Rates Act Area (4), Palmerston Municipality (3), Alice Springs Municipality (2), Darwin Municipality (2), Barkly Region (1), Un-Incorporated (Nhulunbuy) Area (1)

## Vehicles, Machinery and Equipment

### Engines - Generators

Supply of industrial generators including diesel gensets.

Total NT Businesses	Business Scale			Business Size			Aboriginal Owned
	S	M	L	S	M	L	
18	7	1	10	5	6	7	-

**Regional Diversity:** Darwin Municipality (7), Alice Springs Municipality (4), Northern Territory Rates Act Area (4), Palmerston Municipality (3), Katherine Municipality (1), Litchfield Municipality (1), Un-Incorporated (Nhulunbuy) Area (1)

### Heavy Machinery Hire

Cranes, graders, water trucks, dozers, bucket loaders, excavators, haul packs, forklifts, telehandlers.

Total NT Businesses	Business Scale			Business Size			Aboriginal Owned
	S	M	L	S	M	L	
26	12	2	12	11	7	8	2

**Regional Diversity:** Palmerston Municipality (8), Darwin Municipality (7), Northern Territory Rates Act Area (6), Litchfield Municipality (4), Alice Springs Municipality (3), Katherine Municipality (3), Un-Incorporated (Nhulunbuy) Area (1)

### Plant Equipment Hire

Lighting towers, air compressors, pumps, air coolers, elevated work platforms, mine spec light vehicles.

Total NT Businesses	Business Scale			Business Size			Aboriginal Owned
	S	M	L	S	M	L	
15	7	-	8	6	4	5	-

**Regional Diversity:** Palmerston Municipality (6), Darwin Municipality (5), Northern Territory Rates Act Area (3), Litchfield Municipality (2), Katherine Municipality (1)

**BUSINESS SCALE = TURNOVER:** Small <\$1m - \$10m | Medium \$10m - \$20m | Large >\$20m

**BUSINESS SIZE = EMPLOYEES:** Small 5 - 19 | Medium 20 - 199 | Large 200+

**CAPABILITY = NUMBER OF CAPABLE BUSINESSES:** Modest 1-5 | Moderate 6-10 | High 11+

## Water Truck

Wet or dry hire for water cartage machinery to provide dust suppression for site and access roads.

 <b>Total NT Businesses</b>	 <b>Business Scale</b>			 <b>Business Size</b>			 <b>Aboriginal Owned</b>
	S	M	L	S	M	L	
11	7	1	3	7	2	2	1

**Regional Diversity:** Litchfield Municipality (5), Darwin Municipality (2), Palmerston Municipality (2), Barkly Region (1), Northern Territory Rates Act Area (1)

## Waste Management

### Waste Collection, Treatment and Disposal

Waste collection (bin hiring, garbage collection, industrial or hazardous waste), other waste (liquid, oil and septic tank), waste treatment, disposal and remediation (landfills, rubbish dump, asbestos removal, materials separating, hazardous material removal).

 <b>Total NT Businesses</b>	 <b>Business Scale</b>			 <b>Business Size</b>			 <b>Aboriginal Owned</b>
	S	M	L	S	M	L	
27	7	7	13	6	12	9	3

**Regional Diversity:** Darwin Municipality (15), Northern Territory Rates Act Area (8), Alice Springs Municipality (6), Katherine Municipality (4), Litchfield Municipality (3), East Arnhem Region (2), Barkly Region (1), Palmerston Municipality (1), West Arnhem Region (1)

### Wastewater Treatment (Including Brine Management)

Construction and operation of a water treatment plant. The wastewater generated from hydrogen production may contain chemicals, contaminants and impurities, including brine, and needs to be treated before it can be reused or discharged to prevent environmental damage. Treatment methods can include reverse osmosis (RO), distillation, ion exchange and membrane filtration.

 <b>Total NT Businesses</b>	 <b>Business Scale</b>			 <b>Business Size</b>			 <b>Aboriginal Owned</b>
	S	M	L	S	M	L	
17	7	3	7	4	10	3	1

**Regional Diversity:** Darwin Municipality (11), Northern Territory Rates Act Area (3), Katherine Municipality (2), Litchfield Municipality (2), Palmerston Municipality (2), Alice Springs Municipality (1), East Arnhem Region (1), West Arnhem Region (1)



Civil road construction

# Hydrogen Production

## Chemical Processing

### Biogas Supply

Supply of methane from biogas used in the chemical processing of hydrogen.

Total NT Businesses	Business Scale			Business Size			Aboriginal Owned	National Capability
	S	M	L	S	M	L		
1	-	-	1	-	1	-	-	YES

Regional Diversity: Darwin Municipality (1)

### Biomass Gasification, Methanation, Pyrolysis, Auto Thermal Reforming, Steam Reforming

Methods of converting feedstocks such as methane or biomass into hydrogen. See also professional services for engineering and design consultancies, and common elements for suppliers of goods and services such as pressure vessels, pumps and piping.

Total NT Businesses	Business Scale			Business Size			Aboriginal Owned	National Capability
	S	M	L	S	M	L		
No capability identified	-	-	-	-	-	-	-	YES

### Cryogenic Separation

Supply and installation of cryogenic separation units, which purify hydrogen by cooling the gas mixture to very low temperatures, causing impurities to condense and separate from hydrogen.

Total NT Businesses	Business Scale			Business Size			Aboriginal Owned	National Capability
	S	M	L	S	M	L		
No capability identified	-	-	-	-	-	-	-	YES

### Membrane Separation

Supply and installation of membrane separation units, which use selective membranes to separate hydrogen from other gases based on differences in molecular size and permeability

Total NT Businesses	Business Scale			Business Size			Aboriginal Owned	National Capability
	S	M	L	S	M	L		
1	-	-	1	-	-	1	-	YES

Regional Diversity: Darwin Municipality (1)

**BUSINESS SCALE = TURNOVER:** Small <\$1m - \$10m | Medium \$10m - \$20m | Large >\$20m  
**BUSINESS SIZE = EMPLOYEES:** Small 5 - 19 | Medium 20 - 199 | Large 200+  
**CAPABILITY = NUMBER OF CAPABLE BUSINESSES:** Modest 1-5 | Moderate 6-10 | High 11+

## Pressure Swing Adsorption Unit (PSA)

Supply and installation of pressure swing adsorption (PSA) units, used to purify hydrogen by adsorbing impurities at high pressure and desorbing them at low pressure.

Total NT Businesses	Business Scale			Business Size			Aboriginal Owned	National Capability
	S	M	L	S	M	L		
1	-	-	1	-	-	1	-	YES

Regional Diversity: Darwin Municipality (1)

## Control and Automation

### Instruments - Anemometer and Wind Vanes

Supply of anemometers and wind vanes used to measure wind speed and direction in renewable energy applications.

Total NT Businesses	Business Scale			Business Size			Aboriginal Owned	National Capability
	S	M	L	S	M	L		
No capability identified	-	-	-	-	-	-	-	YES

Instrumentation calibration



## Instruments - Chemical Analysers Including Gas Detectors

Supply of instruments used to analyse chemical compositions and properties of substances and detect the presence of hazardous gases.

Total NT Businesses	Business Scale			Business Size			Aboriginal Owned
	S	M	L	S	M	L	
6	1	1	4	2	-	4	1

Regional Diversity: Darwin Municipality (4), Alice Springs Municipality (1), Katherine Municipality (1), Northern Territory Rates Act Area (1), Palmerston Municipality (1)

## Instruments - Meters

Supply of meters including power, energy, flow, pressure, temperature, and humidity meters.

Total NT Businesses	Business Scale			Business Size			Aboriginal Owned
	S	M	L	S	M	L	
18	4	3	11	5	4	9	1

Regional Diversity: Darwin Municipality (13), Alice Springs Municipality (3), Palmerston Municipality (3), Katherine Municipality (2), Northern Territory Rates Act Area (2), Barkly Region (1), Litchfield Municipality (1)

## Instruments - Sensors, Probes and Spectrometers

Supply of other instruments used in renewable energy or hydrogen production processes including infrared cameras, sensors, probes, and spectrometers.

Total NT Businesses	Business Scale			Business Size			Aboriginal Owned
	S	M	L	S	M	L	
18	2	2	14	3	3	12	2

Regional Diversity: Darwin Municipality (14), Palmerston Municipality (4), Alice Springs Municipality (2), Katherine Municipality (2), Northern Territory Rates Act Area (2)

## Cooling

### Cooling Unit

Supply of cooling units and sub-components include cooling fans, condensers and evaporative cooling. See also Mechanical Services - HVAC.

Total NT Businesses	Business Scale			Business Size			Aboriginal Owned
	S	M	L	S	M	L	
18	10	3	5	8	7	3	-

Regional Diversity: Darwin Municipality (9), Katherine Municipality (4), Northern Territory Rates Act Area (3), Alice Springs Municipality (2), Litchfield Municipality (1), Palmerston Municipality (1)

**BUSINESS SCALE = TURNOVER:** Small <\$1m - \$10m | Medium \$10m - \$20m | Large >\$20m

**BUSINESS SIZE = EMPLOYEES:** Small 5 - 19 | Medium 20 - 199 | Large 200+

**CAPABILITY = NUMBER OF CAPABLE BUSINESSES:** Modest 1-5 | Moderate 6-10 | High 11+

## Electrical and Communications

### Battery Supply

Supply of battery systems including Lithium-ion (Li-ion), LFP, Lead-acid, Vanadium Redox flow, Sodium-sulphur, and Zinc-bromine flow batteries.

 <b>Total NT Businesses</b>	 <b>Business Scale</b>			 <b>Business Size</b>			 <b>Aboriginal Owned</b>
	S	M	L	S	M	L	
11	1	1	9	1	4	6	-

**Regional Diversity:** Darwin Municipality (9), Katherine Municipality (2), Northern Territory Rates Act Area (2), Alice Springs Municipality (1)

### Battery System Installation and Maintenance

Installation, commissioning, and maintenance of battery systems for energy storage.

 <b>Total NT Businesses</b>	 <b>Business Scale</b>			 <b>Business Size</b>			 <b>Aboriginal Owned</b>
	S	M	L	S	M	L	
14	6	2	6	5	6	3	1

**Regional Diversity:** Darwin Municipality (9), Palmerston Municipality (3), Alice Springs Municipality (2), Katherine Municipality (1), Northern Territory Rates Act Area (1)

### Cabling Services

Installation and repair of cabling systems, outlets, and fibre optic cabling for communications and control across the site.

 <b>Total NT Businesses</b>	 <b>Business Scale</b>			 <b>Business Size</b>			 <b>Aboriginal Owned</b>
	S	M	L	S	M	L	
58	38	7	13	29	20	9	9

**Regional Diversity:** Darwin Municipality (25), Alice Springs Municipality (12), Palmerston Municipality (11), Barkly Region (5), Katherine Municipality (4), Litchfield Municipality (4), Northern Territory Rates Act Area (3), Un-Incorporated (Nhulunbuy) Area (2), Central Desert Region (1), Roper Gulf Region (1), Victoria Daly Region (1), West Arnhem Region (1)

### Control Systems

Installation, repair and maintenance of control systems, including PLC automation, industrial management systems, and electronic control systems.

 <b>Total NT Businesses</b>	 <b>Business Scale</b>			 <b>Business Size</b>			 <b>Aboriginal Owned</b>
	S	M	L	S	M	L	
37	19	6	12	16	13	8	4

**Regional Diversity:** Darwin Municipality (20), Alice Springs Municipality (6), Palmerston Municipality (6), Northern Territory Rates Act Area (4), Litchfield Municipality (2), Barkly Region (1), Katherine Municipality (1)

**BUSINESS SCALE = TURNOVER:** Small <\$1m - \$10m | Medium \$10m - \$20m | Large >\$20m

**BUSINESS SIZE = EMPLOYEES:** Small 5 - 19 | Medium 20 - 199 | Large 200+

**CAPABILITY = NUMBER OF CAPABLE BUSINESSES:** Modest 1-5 | Moderate 6-10 | High 11+

## Electrical Panels and Switchgear

Installation, repairs and maintenance of electrical panels, switchgear, and related components.

Total NT Businesses	Business Scale			Business Size			Aboriginal Owned
	S	M	L	S	M	L	
59	36	7	16	30	20	9	6

**Regional Diversity:** Darwin Municipality (31), Alice Springs Municipality (11), Palmerston Municipality (11), Katherine Municipality (4), Northern Territory Rates Act Area (4), Litchfield Municipality (3), Un-Incorporated (Nhulunbuy) Area (2), Barkly Region (1)

## IT and Communication Systems

Installation, repairs and maintenance of IT and communication systems, including computers, servers, network equipment, and software.

Total NT Businesses	Business Scale			Business Size			Aboriginal Owned
	S	M	L	S	M	L	
36	17	6	13	12	12	12	3

**Regional Diversity:** Darwin Municipality (29), Alice Springs Municipality (6), Northern Territory Rates Act Area (3), Barkly Region (2), Palmerston Municipality (2), Katherine Municipality (1)

## Power Transmission and Distribution

Installation, maintenance, and repair of HV power transmission and distribution systems.

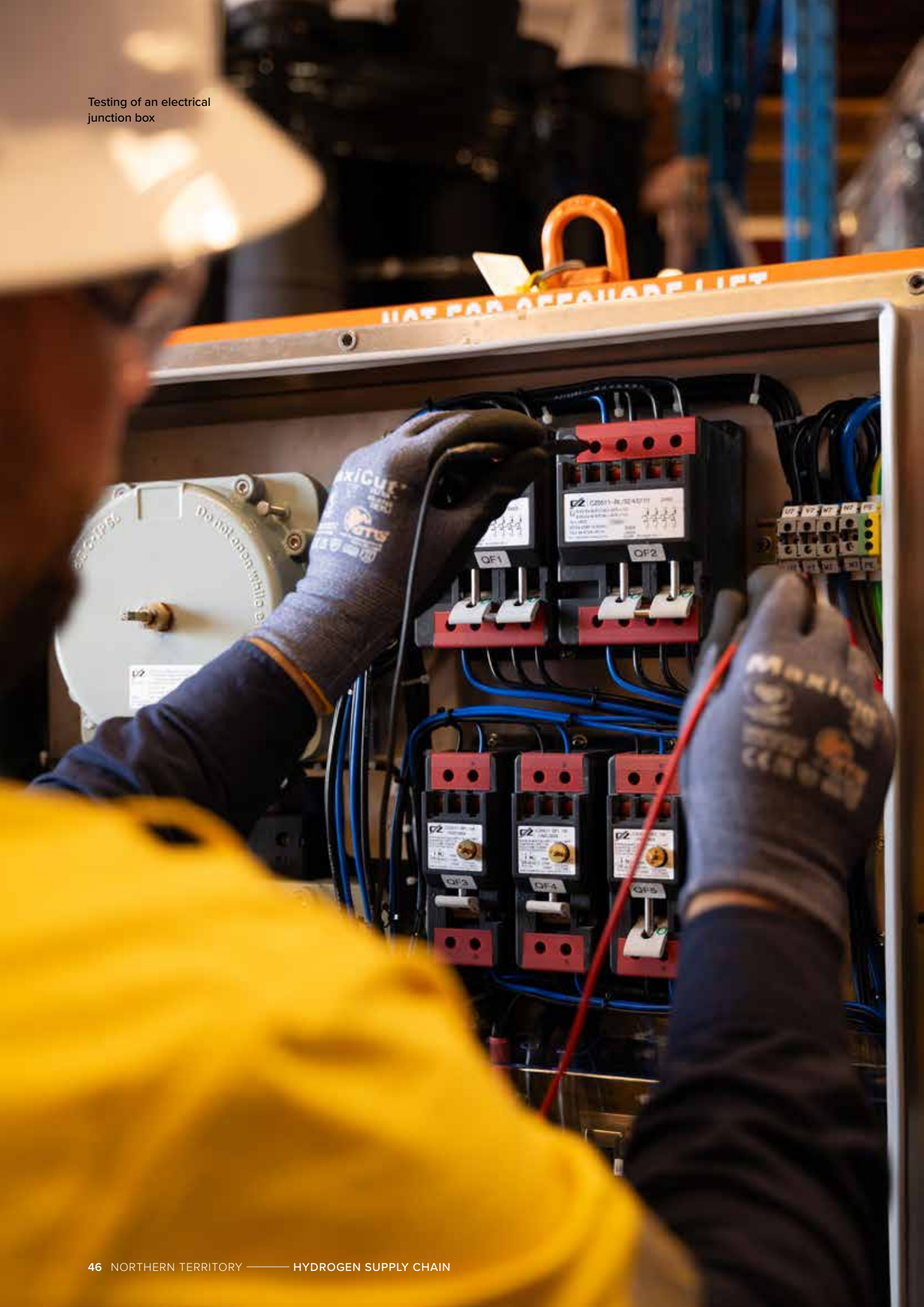
Total NT Businesses	Business Scale			Business Size			Aboriginal Owned
	S	M	L	S	M	L	
21	4	2	15	3	10	8	2

**Regional Diversity:** Darwin Municipality (13), Alice Springs Municipality (3), Barkly Region (3), Litchfield Municipality (3), Northern Territory Rates Act Area (3), Katherine Municipality (2), Palmerston Municipality (2), Central Desert Region (1), Roper Gulf Region (1), Un-Incorporated (Yulara) Area (1), Victoria Daly Region (1)

Transmission lines



Testing of an electrical junction box



## Security Systems

Installation, repairs and maintenance of security systems, including access panels, alarm systems, CCTV, and related cabling and data networks.

 <b>Total NT Businesses</b>	 <b>Business Scale</b>			 <b>Business Size</b>			 <b>Aboriginal Owned</b>
	S	M	L	S	M	L	
19	11	2	6	7	7	5	2

**Regional Diversity:** Darwin Municipality (11), Alice Springs Municipality (5), Palmerston Municipality (4), Northern Territory Rates Act Area (2), Barkly Region (1), Litchfield Municipality (1), Un-Incorporated (Nhulunbuy) Area (1)

## Site Electrical Infrastructure

Installation, repairs and maintenance of site-wide electrical infrastructure. This also includes installation and maintenance of lighting systems.

 <b>Total NT Businesses</b>	 <b>Business Scale</b>			 <b>Business Size</b>			 <b>Aboriginal Owned</b>
	S	M	L	S	M	L	
61	37	7	17	31	20	10	6

**Regional Diversity:** Darwin Municipality (30), Alice Springs Municipality (11), Palmerston Municipality (11), Northern Territory Rates Act Area (6), Katherine Municipality (4), Litchfield Municipality (4), Un-Incorporated (Nhulunbuy) Area (2), Barkly Region (1)

## Substations and Transformers

Design, manufacture, testing, and maintenance of substations and transformers.

 <b>Total NT Businesses</b>	 <b>Business Scale</b>			 <b>Business Size</b>			 <b>Aboriginal Owned</b>
	S	M	L	S	M	L	
16	5	-	11	5	4	7	1

**Regional Diversity:** Darwin Municipality (9), Palmerston Municipality (3), Alice Springs Municipality (2), Katherine Municipality (2), Northern Territory Rates Act Area (2), Litchfield Municipality (1)

## Temporary Power Supply

Supply, installation and operation of temporary power stations and related components.

 <b>Total NT Businesses</b>	 <b>Business Scale</b>			 <b>Business Size</b>			 <b>Aboriginal Owned</b>
	S	M	L	S	M	L	
16	3	1	12	2	4	10	1




**Regional Diversity:** Darwin Municipality (10), Northern Territory Rates Act Area (3), Alice Springs Municipality (2), Katherine Municipality (2), Litchfield Municipality (1), Palmerston Municipality (1)

**BUSINESS SCALE = TURNOVER:** Small <\$1m - \$10m | Medium \$10m - \$20m | Large >\$20m  
**BUSINESS SIZE = EMPLOYEES:** Small 5 - 19 | Medium 20 - 199 | Large 200+  
**CAPABILITY = NUMBER OF CAPABLE BUSINESSES:** Modest 1-5 | Moderate 6-10 | High 11+

## Electrolyser

### Electrolyser and Cell Stack Supply

Supply of electrolyser units. This also includes the manufacture or supply of modular hydrogen electrolyser cell stacks, for example proton exchange membrane (PEM) cells.

 Total NT Businesses	 Business Scale	 Business Size	 Aboriginal Owned	 National Capability
No capability identified	-	-	-	NO

### Rectifier

Supply of rectifiers used to convert alternating current (AC) to direct current (DC). The rectifier ensures the voltage and current delivered to the electrolyser are at the correct levels to drive the electrolysis reaction.




 Total NT Businesses	 Business Scale	 Business Size	 Aboriginal Owned	 National Capability
4	S -    M -    L 4	S -    M 1    L 3	-	YES

Regional Diversity: Darwin Municipality (3), Northern Territory Rates Act Area (1)

## Heat




### Burners

Supply of burners used to generate heat or to combust fuel to produce energy, used in processes such as biomass combustion, gasification, and hydrogen production by steam reforming.

 Total NT Businesses	 Business Scale	 Business Size	 Aboriginal Owned	 National Capability
No capability identified	-	-	-	YES

### Heat Exchangers

Supply of rectifiers used to convert alternating current (AC) to direct current (DC). The rectifier ensures the voltage and current delivered to the electrolyser are at the correct levels to drive the electrolysis reaction.

 Total NT Businesses	 Business Scale	 Business Size	 Aboriginal Owned	 National Capability
No capability identified	-	-	-	YES

### Process Heaters, Immersion Heaters, Superheaters

Supply of process heaters, immersion heaters, and superheaters used in renewable energy and hydrogen production processes.

 Total NT Businesses	 Business Scale	 Business Size	 Aboriginal Owned	 National Capability
No capability identified	-	-	-	YES

Preparation of an extrinsically  
safe (Ex) work enclosure.



# Professional and Technical Services

## Architectural Services

Providing architectural services such as planning and designing buildings and structures; or planning and designing the development of land.

 <b>Total NT Businesses</b>	 <b>Business Scale</b>			 <b>Business Size</b>			 <b>Aboriginal Owned</b>
	S	M	L	S	M	L	
15	5	-	10	4	2	9	1

**Regional Diversity:** Darwin Municipality (13), Alice Springs Municipality (2), Darwin Waterfront Precinct Municipality (1), Palmerston Municipality (1)

## Concrete Testing

Slump testing, compression testing, core testing, sampling, and inspection.

 <b>Total NT Businesses</b>	 <b>Business Scale</b>			 <b>Business Size</b>			 <b>Aboriginal Owned</b>
	S	M	L	S	M	L	
8	2	-	6	1	3	4	-

**Regional Diversity:** Darwin Municipality (4), Alice Springs Municipality (2), Katherine Municipality (2), Northern Territory Rates Act Area (2), Litchfield Municipality (1), Un-Incorporated (Elrundie) Area (1), Un-Incorporated (Nhulunbuy) Area (1)

## Drone Services

Aerial inspection and survey, spatial data, data gathering, photography, and asset inspection.

 <b>Total NT Businesses</b>	 <b>Business Scale</b>			 <b>Business Size</b>			 <b>Aboriginal Owned</b>
	S	M	L	S	M	L	
30	20	3	7	19	4	7	4

**Regional Diversity:** Darwin Municipality (19), Alice Springs Municipality (4), Palmerston Municipality (3), Katherine Municipality (2), Northern Territory Rates Act Area (2), Un-Incorporated (Nhulunbuy) Area (2), Barkly Region (1), Coomalie Shire (1), Litchfield Municipality (1), Un-Incorporated (Alyangula) Area (1)

## Engineering Services

Ad-hoc mechanical, civil, structural, electrical, and environmental engineering services, including design, planning, assessment, drafting, project management, and consulting.

 <b>Total NT Businesses</b>	 <b>Business Scale</b>			 <b>Business Size</b>			 <b>Aboriginal Owned</b>
	S	M	L	S	M	L	
33	12	3	18	8	11	14	2

**Regional Diversity:** Darwin Municipality (30), Alice Springs Municipality (2), Palmerston Municipality (2), Coomalie Shire (1), Litchfield Municipality (1), Un-Incorporated (Nhulunbuy) Area (1)

## Environmental Consultancy Services

Provision of consultancy on environmental issues and lower environmental impact in areas such as water pollution, waste management, air quality, and soil contamination.

Total NT Businesses	Business Scale			Business Size			Aboriginal Owned
	S	M	L	S	M	L	
29	7	5	17	4	12	13	2

**Regional Diversity:** Darwin Municipality (23), Alice Springs Municipality (3), Northern Territory Rates Act Area (2), Palmerston Municipality (2), Coomalie Shire (1), East Arnhem Region (1), Katherine Municipality (1)

## Geotechnical Services

Test pit excavation, in situ testing, SPT, soil resistivity testing, seismic wave testing, backfilling, and reporting.

Total NT Businesses	Business Scale			Business Size			Aboriginal Owned
	S	M	L	S	M	L	
22	8	1	13	6	7	9	-

**Regional Diversity:** Darwin Municipality (12), Alice Springs Municipality (5), Litchfield Municipality (4), Northern Territory Rates Act Area (3), Katherine Municipality (2), Un-Incorporated (Elrundie) Area (1)

## Groundwater Modelling

Specialist modelling of aquifers from drilling results and hydro studies.

Total NT Businesses	Business Scale			Business Size			Aboriginal Owned
	S	M	L	S	M	L	
17	4	-	13	2	4	11	-

**Regional Diversity:** Darwin Municipality (15), Alice Springs Municipality (2), Northern Territory Rates Act Area (2), Katherine Municipality (1)

## Guarantee of Origin

An organisation that provides certification of the origin and characteristics of energy generated from renewable sources. It serves as proof that a certain amount of energy has been produced from renewable sources, such as wind, solar, hydro, biomass, or geothermal, and it allows consumers to track and verify the renewable energy they consume.

Total NT Businesses	Business Scale	Business Size	Aboriginal Owned	National Capability
No capability identified	-	-	-	YES

**BUSINESS SCALE = TURNOVER:** Small <\$1m - \$10m | Medium \$10m - \$20m | Large >\$20m

**BUSINESS SIZE = EMPLOYEES:** Small 5 - 19 | Medium 20 - 199 | Large 200+

**CAPABILITY = NUMBER OF CAPABLE BUSINESSES:** Modest 1-5 | Moderate 6-10 | High 11+

## Laboratory Services

Soil density testing, earth analysis, soil, air, water, plant, and animal testing, waste rock, and tailings characterisation.

 <b>Total NT Businesses</b>	 <b>Business Scale</b>			 <b>Business Size</b>			 <b>Aboriginal Owned</b>
	S	M	L	S	M	L	
8	2	1	5	-	4	4	-

**Regional Diversity:** Darwin Municipality (6), Alice Springs Municipality (2), Katherine Municipality (1), Un-Incorporated (Elrundie) Area (1)

## Labour Hire / Recruitment Services

Providers of permanent, contract labour hire and labour hire along with personnel identification services and apprenticeships.

 <b>Total NT Businesses</b>	 <b>Business Scale</b>			 <b>Business Size</b>			 <b>Aboriginal Owned</b>
	S	M	L	S	M	L	
23	9	2	12	3	10	10	7

**Regional Diversity:** Darwin Municipality (18), Alice Springs Municipality (2), Barkly Region (2), Northern Territory Rates Act Area (2), Darwin Waterfront Precinct Municipality (1), Katherine Municipality (1), Palmerston Municipality (1)

## Materials Testing

Testing and characterisation of materials to classify strength, resistance and elasticity to ensure integrity. Includes destructive and non-destructive testing.

 <b>Total NT Businesses</b>	 <b>Business Scale</b>			 <b>Business Size</b>			 <b>Aboriginal Owned</b>
	S	M	L	S	M	L	
18	3	1	14	2	8	8	1

**Regional Diversity:** Darwin Municipality (10), Northern Territory Rates Act Area (5), Katherine Municipality (2), Alice Springs Municipality (1), Litchfield Municipality (1), Palmerston Municipality (1), Un-Incorporated (Elrundie) Area (1)

## Pipeline Maintenance

Cleaning pipelines with buildup, rust, mill scale, or debris by chemical flushing and mechanical pigging.

 <b>Total NT Businesses</b>	 <b>Business Scale</b>			 <b>Business Size</b>			 <b>Aboriginal Owned</b>
	S	M	L	S	M	L	
10	1	-	9	-	4	6	-

**Regional Diversity:** Northern Territory Rates Act Area (5), Darwin Municipality (4), Litchfield Municipality (1)

## Quality Control/Quality Assurance (QA/QC)

Provision of QA/QC processes to measure and assure the quality of products and services.

Total NT Businesses	Business Scale			Business Size			Aboriginal Owned
	S	M	L	S	M	L	
17	3	4	10	3	7	7	2

**Regional Diversity:** Darwin Municipality (10), Alice Springs Municipality (5), Northern Territory Rates Act Area (3), Katherine Municipality (2), Un-Incorporated (Nhulunbuy) Area (2), Un-Incorporated (Elrundie) Area (1)

## Security Services

Provision of security guards, security officers, and patrol vehicles to secure site facilities, including construction sites, access roads, and accommodation.

Total NT Businesses	Business Scale			Business Size			Aboriginal Owned
	S	M	L	S	M	L	
23	14	1	8	5	9	9	2

**Regional Diversity:** Darwin Municipality (16), Alice Springs Municipality (5), Palmerston Municipality (2), Barkly Region (1), Katherine Municipality (1), Litchfield Municipality (1)

## Signage

Supply and manufacture of regulatory signs, warning signs, marker signs, guide and informational signs.

Total NT Businesses	Business Scale			Business Size			Aboriginal Owned
	S	M	L	S	M	L	
15	11	-	4	10	2	3	-

**Regional Diversity:** Darwin Municipality (11), Alice Springs Municipality (4), Katherine Municipality (3), Palmerston Municipality (1)

## Site Survey

Surveying services for both land and marine environments.

Total NT Businesses	Business Scale			Business Size			Aboriginal Owned
	S	M	L	S	M	L	
25	7	2	16	5	7	13	2

**Regional Diversity:** Darwin Municipality (22), Alice Springs Municipality (3), Northern Territory Rates Act Area (2), Un-Incorporated (Nhulunbuy) Area (2), Barkly Region (1), East Arnhem Region (1), Katherine Municipality (1), Un-Incorporated (Alyangula) Area (1)

**BUSINESS SCALE = TURNOVER:** Small <\$1m - \$10m | Medium \$10m - \$20m | Large >\$20m  
**BUSINESS SIZE = EMPLOYEES:** Small 5 - 19 | Medium 20 - 199 | Large 200+  
**CAPABILITY = NUMBER OF CAPABLE BUSINESSES:** Modest 1-5 | Moderate 6-10 | High 11+



Checking of site plans and survey drawings.

### Stakeholder Engagement

Collaboration with various individuals, industry, communities, and government organisations to identify key issues, understand challenges, and develop sustainable solutions.

 <b>Total NT Businesses</b>	 <b>Business Scale</b>			 <b>Business Size</b>			 <b>Aboriginal Owned</b>
	S	M	L	S	M	L	
34	18	5	11	11	12	11	8

**Regional Diversity:** Darwin Municipality (28), Alice Springs Municipality (3), Un-Incorporated (Nhulunbuy) Area (2), Barkly Region (1), Coomalie Shire (1), East Arnhem Region (1), Katherine Municipality (1), Palmerston Municipality (1)

### Temporary Work Enclosures

Supply, installation and maintenance of temporary work enclosures onshore and offshore.

 <b>Total NT Businesses</b>	 <b>Business Scale</b>			 <b>Business Size</b>			 <b>Aboriginal Owned</b>
	S	M	L	S	M	L	
7	1	1	5	-	3	4	1

**Regional Diversity:** Northern Territory Rates Act Area (5), Darwin Municipality (2)

## Traditional Owner Engagement

Cultural consultation with traditional owners including gathering feedback.



**Regional Diversity:** Darwin Municipality (10), Barkly Region (4), Alice Springs Municipality (2), Litchfield Municipality (2), Palmerston Municipality (2), Un-Incorporated (Nhulunbuy) Area (2), Coomalie Shire (1), Katherine Municipality (1), Victoria Daly Region (1)

## Training and Licencing

Training and licencing on heavy machinery and registered training providers offering courses including working at heights, EWP, confined space, first aid, trades, LVR/CPR, and verification of competencies.



**Regional Diversity:** Darwin Municipality (13), Alice Springs Municipality (6), Litchfield Municipality (3), Northern Territory Rates Act Area (3), Barkly Region (2), Katherine Municipality (2), Coomalie Shire (1), East Arnhem Region (1), Palmerston Municipality (1)

**BUSINESS SCALE = TURNOVER:** Small <\$1m - \$10m | Medium \$10m - \$20m | Large >\$20m

**BUSINESS SIZE = EMPLOYEES:** Small 5 - 19 | Medium 20 - 199 | Large 200+

**CAPABILITY = NUMBER OF CAPABLE BUSINESSES:** Modest 1-5 | Moderate 6-10 | High 11+

Forklift operation



# Common Elements Supply

## Aluminium

In the hydrogen industry, it is primarily used for electrolyser components, heat exchangers, pressure vessels, piping, tubing, and structural components across production facilities and storage sites.

 <b>Total NT Businesses</b>	 <b>Business Scale</b>			 <b>Business Size</b>			 <b>Aboriginal Owned</b>	 <b>National Capability</b>
	S	M	L	S	M	L		
6	2	-	4	2	2	2	-	YES

**Regional Diversity:** Darwin Municipality (4), Katherine Municipality (1), Litchfield Municipality (1)

## Atmospheric Water Generation Unit

Supply of atmospheric water generation unit for the direct air capture of water.

 <b>Total NT Businesses</b>	 <b>Business Scale</b>			 <b>Business Size</b>			 <b>Aboriginal Owned</b>	 <b>National Capability</b>
	S	M	L	S	M	L		
No capability identified	-	-	-	-	-	-	-	NO

## Bulk Electrical Supplies

Supply of bulk electrical components including glands, junction boxes, conduit, lights, saddles, controllers, tooling, current and voltage transformers, DC Batteries and charger, DC Isolator box, earthing conductor.

 <b>Total NT Businesses</b>	 <b>Business Scale</b>			 <b>Business Size</b>			 <b>Aboriginal Owned</b>
	S	M	L	S	M	L	
7	2	-	5	2	1	4	1

**Regional Diversity:** Darwin Municipality (4), Katherine Municipality (3), Alice Springs Municipality (2), Palmerston Municipality (2), Barkly Region (1), Northern Territory Rates Act Area (1)

## Cable Trays

Supply of cable trays used in conjunction with racking and framing to organise and support electrical wiring and cabling.

 <b>Total NT Businesses</b>	 <b>Business Scale</b>			 <b>Business Size</b>			 <b>Aboriginal Owned</b>
	S	M	L	S	M	L	
8	2	-	6	2	2	4	1

**Regional Diversity:** Darwin Municipality (5), Katherine Municipality (3), Alice Springs Municipality (2), Palmerston Municipality (2), Barkly Region (1), Northern Territory Rates Act Area (1)

## Cathodes/Anodes

Manufacture or supply of cathodes or anodes for cathodic protection.

Total NT Businesses	Business Scale	Business Size	Aboriginal Owned	National Capability
No capability identified	-	-	-	YES

## Chemical Suppliers

Supply of commercial chemical treatments, dry/wet chemical supplies and industrial reagents.

Total NT Businesses	Business Scale	Business Size	Aboriginal Owned	National Capability
4	S: 2, M: -, L: 2	S: 3, M: -, L: 1	-	YES

**Regional Diversity:** Darwin Municipality (3), Alice Springs Municipality (1), Northern Territory Rates Act Area (1)

## Columns

Supply of columns, which are vertical vessels used for separation, purification, and fractionation of substances. This includes distillation columns used in SAF production plants.

Total NT Businesses	Business Scale	Business Size	Aboriginal Owned	National Capability
No capability identified	-	-	-	YES

## Compressors

Supply of compressors used to increase the pressure of a gas in various industrial applications, including gas/hydrogen production, transportation, and storage. Includes reciprocating compressors, diaphragm compressors, and centrifugal compressors.

Total NT Businesses	Business Scale	Business Size	Aboriginal Owned
6	S: -, M: 1, L: 5	S: -, M: 1, L: 5	-

**Regional Diversity:** Darwin Municipality (4), Northern Territory Rates Act Area (2)

**BUSINESS SCALE = TURNOVER:** Small <\$1m - \$10m | Medium \$10m - \$20m | Large >\$20m  
**BUSINESS SIZE = EMPLOYEES:** Small 5 - 19 | Medium 20 - 199 | Large 200+  
**CAPABILITY = NUMBER OF CAPABLE BUSINESSES:** Modest 1-5 | Moderate 6-10 | High 11+

## Concrete Supply

Supply of concrete (wet).

 <b>Total NT Businesses</b>	 <b>Business Scale</b>			 <b>Business Size</b>			 <b>Aboriginal Owned</b>
	S	M	L	S	M	L	
30	9	9	12	8	18	4	7

**Regional Diversity:** Darwin Municipality (9), Katherine Municipality (6), Alice Springs Municipality (5), Litchfield Municipality (5), Barkly Region (3), Palmerston Municipality (3), East Arnhem Region (2), Northern Territory Rates Act Area (2), Roper Gulf Region (2), Macdonnell Region (1), Un-Incorporated (Elrundie) Area (1), Un-Incorporated (Marrakai-Douglas Area) (1), West Arnhem Region (1), West Daly Region (1)

## Dampers

Supply of dampers used to control the flow of air, gas, or other fluids in ducts or pipelines.

 <b>Total NT Businesses</b>	 <b>Business Scale</b>			 <b>Business Size</b>			 <b>Aboriginal Owned</b>
	S	M	L	S	M	L	
7	3	2	2	3	3	1	-

**Regional Diversity:** Darwin Municipality (6), Katherine Municipality (2), Northern Territory Rates Act Area (1)

## Ducting

Supply of ducting used to transport air, gases, or fluids.

 <b>Total NT Businesses</b>	 <b>Business Scale</b>			 <b>Business Size</b>			 <b>Aboriginal Owned</b>
	S	M	L	S	M	L	
12	5	2	5	2	6	4	-

**Regional Diversity:** Darwin Municipality (9), Katherine Municipality (2), Northern Territory Rates Act Area (2), Alice Springs Municipality (1), Palmerston Municipality (1)

## Fasteners

Supply of fasteners and fittings such as bolts, screws, nuts, washers, anchors, clamps, and brackets.

 <b>Total NT Businesses</b>	 <b>Business Scale</b>			 <b>Business Size</b>			 <b>Aboriginal Owned</b>
	S	M	L	S	M	L	
25	7	2	16	7	8	10	1

**Regional Diversity:** Darwin Municipality (17), Alice Springs Municipality (7), Palmerston Municipality (7), Katherine Municipality (4), Barkly Region (1), Litchfield Municipality (1), Northern Territory Rates Act Area (1), Un-Incorporated (Nhulunbuy) Area (1)

## Filters

Supply of filters used in renewable energy and hydrogen production, including carbon, cartridge, coalescer, dual media, and particulate filters, screens, strainers and coarse filters.

 <b>Total NT Businesses</b>	 <b>Business Scale</b>			 <b>Business Size</b>			 <b>Aboriginal Owned</b>
	S	M	L	S	M	L	
9	7	1	1	5	3	1	1

**Regional Diversity:** Darwin Municipality (4), Litchfield Municipality (2), Palmerston Municipality (2), Alice Springs Municipality (1), Northern Territory Rates Act Area (1)

## Gas Dehydrators

Supply of gas dehydrators used to remove moisture from hydrogen and oxygen streams produced by electrolyzers and other hydrogen production processes.

 <b>Total NT Businesses</b>	 <b>Business Scale</b>			 <b>Business Size</b>			 <b>Aboriginal Owned</b>	 <b>National Capability</b>
	S	M	L	S	M	L		
No capability identified	-	-	-	-	-	-	-	YES

## Gaskets

Supply of gaskets (mechanical seals) made of flexible materials such as rubber, cork, or graphite, used to prevent leakage and maintain pressure between two or more stationary components.

 <b>Total NT Businesses</b>	 <b>Business Scale</b>			 <b>Business Size</b>			 <b>Aboriginal Owned</b>
	S	M	L	S	M	L	
12	5	1	6	4	2	6	-

**Regional Diversity:** Darwin Municipality (8), Palmerston Municipality (5), Alice Springs Municipality (2), Barkly Region (1), Katherine Municipality (1)

## Glass Reinforced Plastic

Supply of glass reinforced plastic (fibreglass) and other composites such as carbon fibre and natural fibre. Used specifically in Electrolyser housings, composite storage tanks, and reinforcement of pipelines.

 <b>Total NT Businesses</b>	 <b>Business Scale</b>			 <b>Business Size</b>			 <b>Aboriginal Owned</b>	 <b>National Capability</b>
	S	M	L	S	M	L		
4	1	-	3	-	2	2	-	YES

**Regional Diversity:** Darwin Municipality (4)

**BUSINESS SCALE = TURNOVER:** Small <\$1m - \$10m | Medium \$10m - \$20m | Large >\$20m  
**BUSINESS SIZE = EMPLOYEES:** Small 5 - 19 | Medium 20 - 199 | Large 200+  
**CAPABILITY = NUMBER OF CAPABLE BUSINESSES:** Modest 1-5 | Moderate 6-10 | High 11+

## Heat Transfer Fluids

Supply of heat transfer fluids including synthetic oils, propylene glycol, ethylene glycol, thermal oils, molten salt, and refrigerants.

 <b>Total NT Businesses</b>	 <b>Business Scale</b>			 <b>Business Size</b>			 <b>Aboriginal Owned</b>	 <b>National Capability</b>
	S	M	L	S	M	L		
5	-	-	5	1	1	3	-	YES

**Regional Diversity:** Darwin Municipality (3), Alice Springs Municipality (1), Litchfield Municipality (1), Northern Territory Rates Act Area (1)

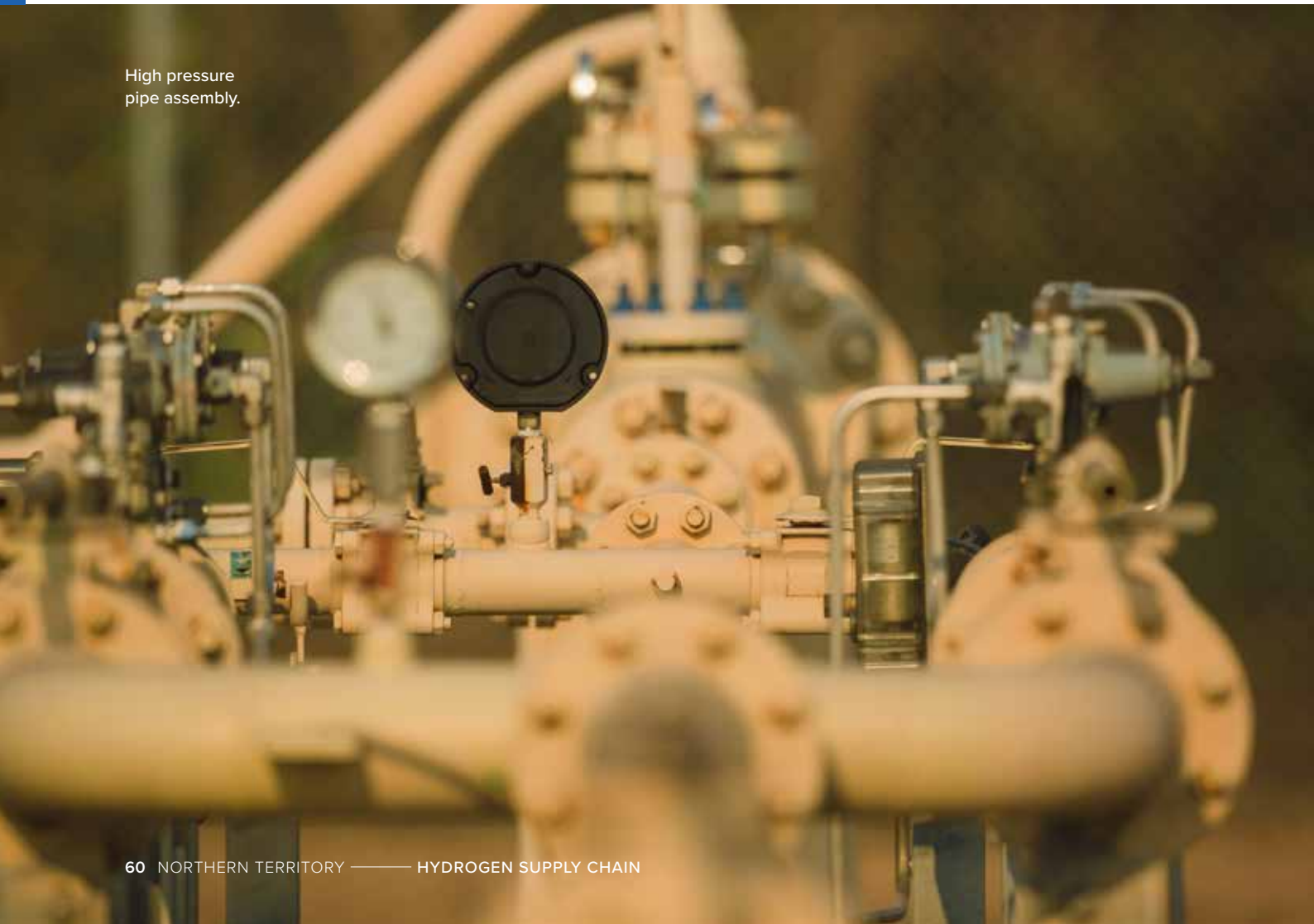
## High-Pressure Pipe

Supply of pipes designed to withstand high pressures and temperatures, made from materials such as carbon steel, stainless steel, alloy steel or HDPE. For applications such as hydrogen and gas pipelines.

 <b>Total NT Businesses</b>	 <b>Business Scale</b>			 <b>Business Size</b>			 <b>Aboriginal Owned</b>
	S	M	L	S	M	L	
10	5	2	3	5	4	1	-

**Regional Diversity:** Darwin Municipality (5), Northern Territory Rates Act Area (2), Palmerston Municipality (2), Litchfield Municipality (1)

High pressure pipe assembly.



## Low-Pressure Pipe

Supply of low-pressure pipes used to transport fluids or gases, made from materials such as carbon steel, stainless steel or plastic. For applications such as water mains.

Total NT Businesses	Business Scale			Business Size			Aboriginal Owned
	S	M	L	S	M	L	
21	12	2	7	11	5	5	1

**Regional Diversity:** Darwin Municipality (7), Palmerston Municipality (7), Katherine Municipality (4), Northern Territory Rates Act Area (3), Alice Springs Municipality (2), Litchfield Municipality (2)

## Packing

Supply of catalytic packing (filler material) used in renewable energy and hydrogen production to increase the surface area available for mass transfer or to provide support for catalysts.

Total NT Businesses	Business Scale	Business Size	Aboriginal Owned	National Capability
No capability identified	-	-	-	YES

## Personal Protective Equipment (PPE)

Supply of Personal Protective Equipment.

Total NT Businesses	Business Scale			Business Size			Aboriginal Owned
	S	M	L	S	M	L	
32	12	3	17	15	7	10	3

**Regional Diversity:** Darwin Municipality (22), Alice Springs Municipality (4), Katherine Municipality (4), Palmerston Municipality (4), Barkly Region (2), Northern Territory Rates Act Area (2), East Arnhem Region (1), Litchfield Municipality (1)

## Pipe Fittings and Supports

Supply of pipe fittings including flanges, elbows, tees, couplings and reducers to ensure the reliable and efficient transport of fluids and gases. Also includes the supply of supports to hold pipes and other equipment in place and to prevent excessive movement or vibration, made from materials such as steel or other metals.

Total NT Businesses	Business Scale			Business Size			Aboriginal Owned
	S	M	L	S	M	L	
12	3	1	8	4	3	5	-

**Regional Diversity:** Darwin Municipality (6), Palmerston Municipality (3), Litchfield Municipality (2), Northern Territory Rates Act Area (2), Katherine Municipality (1)

**BUSINESS SCALE = TURNOVER:** Small <\$1m - \$10m | Medium \$10m - \$20m | Large >\$20m

**BUSINESS SIZE = EMPLOYEES:** Small 5 - 19 | Medium 20 - 199 | Large 200+

**CAPABILITY = NUMBER OF CAPABLE BUSINESSES:** Modest 1-5 | Moderate 6-10 | High 11+

Conveyor carrying  
crushed rock.



## Pumps

Supply of pumps to move fluids, gases or other materials including centrifugal, positive displacement, gear, diaphragm, axial flow, submersible, recirculation and reciprocating pumps.

Total NT Businesses	Business Scale			Business Size			Aboriginal Owned
	S	M	L	S	M	L	
14	3	3	8	1	8	5	1

**Regional Diversity:** Darwin Municipality (4), Palmerston Municipality (4), Northern Territory Rates Act Area (3), Alice Springs Municipality (2), Litchfield Municipality (2)

## Quarry Products

Supply of rock, sand, aggregate, and other fill materials.

Total NT Businesses	Business Scale			Business Size			Aboriginal Owned
	S	M	L	S	M	L	
28	12	5	11	9	15	4	3

**Regional Diversity:** Darwin Municipality (9), Alice Springs Municipality (6), Litchfield Municipality (6), Katherine Municipality (5), Palmerston Municipality (5), Un-Incorporated (Marrakai-Douglas Area) (4), Northern Territory Rates Act Area (2), Barkly Region (1), East Arnhem Region (1), Un-Incorporated (Nhulunbuy) Area (1)

## Silencers/Hoods

Supply of duct silencers and fume hoods to reduce noise and control airflow in ventilation systems, industrial processes, or mechanical equipment used in renewable energy and hydrogen production.

Total NT Businesses	Business Scale			Business Size			Aboriginal Owned	National Capability
	S	M	L	S	M	L		
5	3	-	2	2	2	1	-	YES

**Regional Diversity:** Darwin Municipality (3), Katherine Municipality (1), Northern Territory Rates Act Area (1), Palmerston Municipality (1)

## Silicone Hose

Supply of silicone hoses designed to withstand high temperatures and pressure used in various renewable energy and hydrogen production applications.

Total NT Businesses	Business Scale			Business Size			Aboriginal Owned	National Capability
	S	M	L	S	M	L		
1	-	-	1	-	-	1	-	YES

**Regional Diversity:** Alice Springs Municipality (1), Darwin Municipality (1), Palmerston Municipality (1)

**BUSINESS SCALE = TURNOVER:** Small <\$1m - \$10m | Medium \$10m - \$20m | Large >\$20m  
**BUSINESS SIZE = EMPLOYEES:** Small 5 - 19 | Medium 20 - 199 | Large 200+  
**CAPABILITY = NUMBER OF CAPABLE BUSINESSES:** Modest 1-5 | Moderate 6-10 | High 11+

Tying and fixing reinforcing steel.



### Specialised Metals

Supply of specialised metals such as titanium, copper, nickel, magnesium, zinc, lead, and tungsten.

 Total NT Businesses	 Business Scale	 Business Size	 Aboriginal Owned	 National Capability
No capability identified	-	-	-	YES

### Steel - Reinforcing

Supply of reinforcing steel such as steel bar or mesh used to reinforce concrete structures.

 Total NT Businesses	 Business Scale			 Business Size			 Aboriginal Owned
	S	M	L	S	M	L	
6	2	1	3	2	2	2	-

**Regional Diversity:** Alice Springs Municipality (2), Darwin Municipality (2), Northern Territory Rates Act Area (1), Palmerston Municipality (1)

## Steel - Structural

Supply of structural steel.

 <b>Total NT Businesses</b>	 <b>Business Scale</b>			 <b>Business Size</b>			 <b>Aboriginal Owned</b>	 <b>National Capability</b>
	S	M	L	S	M	L		
5	2	-	3	3	1	1	-	YES

**Regional Diversity:** Alice Springs Municipality (1), Darwin Municipality (1), Katherine Municipality (1), Litchfield Municipality (1), Northern Territory Rates Act Area (1)

## Tanks - Gas (Including Oxygen, CO<sub>2</sub> And Helium)

Supply of tanks for gas, oxygen, CO<sub>2</sub> and helium.

 <b>Total NT Businesses</b>	 <b>Business Scale</b>			 <b>Business Size</b>			 <b>Aboriginal Owned</b>
	S	M	L	S	M	L	
8	-	-	8	1	-	7	-

**Regional Diversity:** Darwin Municipality (5), Alice Springs Municipality (4), Litchfield Municipality (1), Northern Territory Rates Act Area (1), Palmerston Municipality (1)

## Tanks - Water

Supply of water tanks.

 <b>Total NT Businesses</b>	 <b>Business Scale</b>			 <b>Business Size</b>			 <b>Aboriginal Owned</b>
	S	M	L	S	M	L	
11	10	-	1	9	2	-	1

**Regional Diversity:** Darwin Municipality (3), Katherine Municipality (3), Litchfield Municipality (3), Alice Springs Municipality (2), Northern Territory Rates Act Area (1), Palmerston Municipality (1)

## Valves

Supply of valves used to control the flow of fluids or gases including ball, gate, butterfly, check, pressure relief, globe, diaphragm, solenoid, pressure control, needle, motor, pneumatic, and ball check valves.

 <b>Total NT Businesses</b>	 <b>Business Scale</b>			 <b>Business Size</b>			 <b>Aboriginal Owned</b>
	S	M	L	S	M	L	
30	7	5	18	8	9	13	1

**Regional Diversity:** Darwin Municipality (19), Palmerston Municipality (8), Alice Springs Municipality (3), Northern Territory Rates Act Area (3), Katherine Municipality (2), Litchfield Municipality (2), Barkly Region (1)

**BUSINESS SCALE = TURNOVER:** Small <\$1m - \$10m | Medium \$10m - \$20m | Large >\$20m

**BUSINESS SIZE = EMPLOYEES:** Small 5 - 19 | Medium 20 - 199 | Large 200+

**CAPABILITY = NUMBER OF CAPABLE BUSINESSES:** Modest 1-5 | Moderate 6-10 | High 11+

# Transport and Logistics

## Air Services

FIFO and charter operation, crew transport, cargo/freight solutions, helicopter services for charter and specialist project work as required.

 <b>Total NT Businesses</b>	 <b>Business Scale</b>			 <b>Business Size</b>			 <b>Aboriginal Owned</b>
	S	M	L	S	M	L	
19	12	3	4	10	7	2	1

**Regional Diversity:** Darwin Municipality (8), Alice Springs Municipality (3), East Arnhem Region (3), Katherine Municipality (3), Un-Incorporated (Yulara) Area (3), Coomalie Shire (1), Litchfield Municipality (1), Northern Territory Rates Act Area (1), West Arnhem Region (1)

## Freight - Rail

Rail freight transport using railroads and trains to transport cargo.

 <b>Total NT Businesses</b>	 <b>Business Scale</b>			 <b>Business Size</b>			 <b>Aboriginal Owned</b>
	S	M	L	S	M	L	
11	1	-	10	1	1	9	-

**Regional Diversity:** Northern Territory Rates Act Area (8), Darwin Municipality (2), Alice Springs Municipality (1)

## Freight - Road

Also referred to as 'road haulage' or 'road transport', road freight is the transfer of goods and merchandise on roadways with the use of a vehicle (usually a truck).

 <b>Total NT Businesses</b>	 <b>Business Scale</b>			 <b>Business Size</b>			 <b>Aboriginal Owned</b>
	S	M	L	S	M	L	
36	13	1	22	10	9	17	3

**Regional Diversity:** Northern Territory Rates Act Area (17), Darwin Municipality (9), Alice Springs Municipality (4), Katherine Municipality (4), Litchfield Municipality (3), Palmerston Municipality (3), Roper Gulf Region (1)

## Freight - Sea

Sea freight is defined as a method of transporting large amounts of goods using carrier ships.

 <b>Total NT Businesses</b>	 <b>Business Scale</b>			 <b>Business Size</b>			 <b>Aboriginal Owned</b>
	S	M	L	S	M	L	
17	-	1	16	-	2	15	-

**Regional Diversity:** Darwin Municipality (9), Northern Territory Rates Act Area (8), Alice Springs Municipality (1), East Arnhem Region (1), Un-Incorporated (Alyangula) Area (1), Un-Incorporated (Nhulunbuy) Area (1)

## Pipeline Network Owner/Transporter

Operating, managing, and maintaining a pipeline network that transports hydrogen gas from production facilities to end-users.

 <b>Total NT Businesses</b>	 <b>Business Scale</b>			 <b>Business Size</b>			 <b>Aboriginal Owned</b>
	S	M	L	S	M	L	
3	-	-	3	-	-	3	-

**Regional Diversity:** Barkly Region (2), Darwin Municipality (2), Alice Springs Municipality (1), Litchfield Municipality (1), Un-Incorporated (Yulara) Area (1)

## Shipping Containers

Supply of shipping containers.

 <b>Total NT Businesses</b>	 <b>Business Scale</b>			 <b>Business Size</b>			 <b>Aboriginal Owned</b>
	S	M	L	S	M	L	
5	-	-	5	-	2	3	-

**Regional Diversity:** Darwin Municipality (4), Northern Territory Rates Act Area (1)

## Warehousing and Storage Services

Warehousing and storage including bulk petroleum storage, cool room storage and general warehousing services.

 <b>Total NT Businesses</b>	 <b>Business Scale</b>			 <b>Business Size</b>			 <b>Aboriginal Owned</b>
	S	M	L	S	M	L	
29	4	1	24	2	9	18	1

**Regional Diversity:** Northern Territory Rates Act Area (16), Darwin Municipality (12), Alice Springs Municipality (2), Katherine Municipality (2), Barkly Region (1), Palmerston Municipality (1), Tiwi Islands Region (1)

## Water Cartage

Water cartage services to site and camp, supply of bulk water and potable water.

 <b>Total NT Businesses</b>	 <b>Business Scale</b>			 <b>Business Size</b>			 <b>Aboriginal Owned</b>
	S	M	L	S	M	L	
13	8	2	3	8	4	1	2

**Regional Diversity:** Litchfield Municipality (6), Alice Springs Municipality (3), Katherine Municipality (3), Northern Territory Rates Act Area (2), Barkly Region (1), Darwin Municipality (1), East Arnhem Region (1), Palmerston Municipality (1)

**BUSINESS SCALE = TURNOVER:** Small <\$1m - \$10m | Medium \$10m - \$20m | Large >\$20m

**BUSINESS SIZE = EMPLOYEES:** Small 5 - 19 | Medium 20 - 199 | Large 200+

**CAPABILITY = NUMBER OF CAPABLE BUSINESSES:** Modest 1-5 | Moderate 6-10 | High 11+

Piping transportation lines.

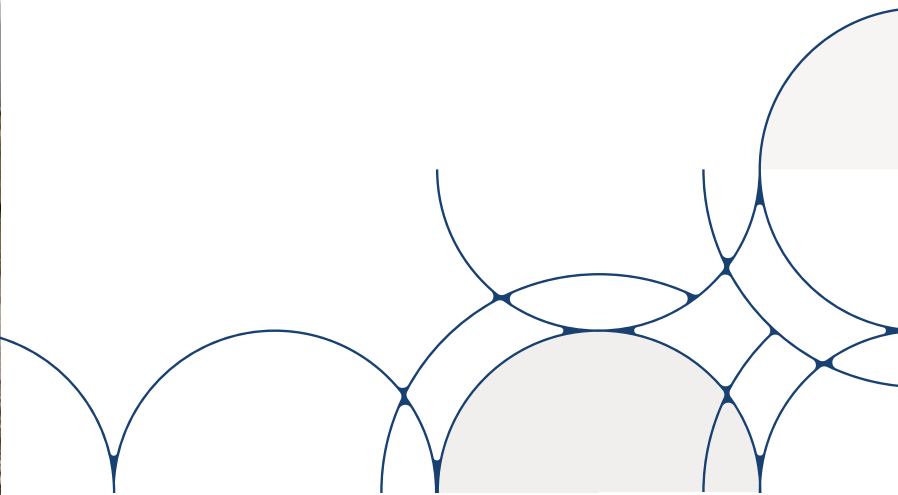




# Disclaimer

ICN NT has carefully prepared this report to map and assess the capability of the Territory's hydrogen sector. This is a point-in-time report based on information supplied to September 2024.

ICN NT makes no guarantees regarding the accuracy of the information provided and accepts no liability for any loss or damage arising from reliance on the data, regardless of any potential errors, omissions, or negligence by ICN NT or its representatives, contractors, or affiliates. Subject to applicable laws, ICN NT disclaims all warranties concerning the accuracy, quality, merchantability, or fitness for a specific purpose of any content, linked materials, products, or services mentioned in this report.



# Further Information Required?



## Northern Territory Government

The Department of Mining and Energy supports the Territory's key resources industry, with a key focus on energy and mineral development. For all enquiries contact us below.

Department of Mining and Energy  
Northern Territory Government

PHONE: 8999 6144

EMAIL: [sustainableenergy.dme@nt.gov.au](mailto:sustainableenergy.dme@nt.gov.au)

WEBSITE: [territoryrenewableenergy.nt.gov.au](http://territoryrenewableenergy.nt.gov.au)



## ICN NT

Contact ICN NT for assistance identifying capable Northern Territory business that meet your specific project requirements.

101/12 Salonika Street,  
Parap NT 0820

PHONE: 8922 9422

EMAIL: [info@icnnt.org.au](mailto:info@icnnt.org.au)

WEBSITE: [gateway.icn.org.au](http://gateway.icn.org.au)







SCAN TO VISIT GATEWAY BY ICN  
[gateway.icn.org.au](https://gateway.icn.org.au)



SCAN FOR MORE DETAILS  
[territoryrenewableenergy.nt.gov.au](https://territoryrenewableenergy.nt.gov.au)

